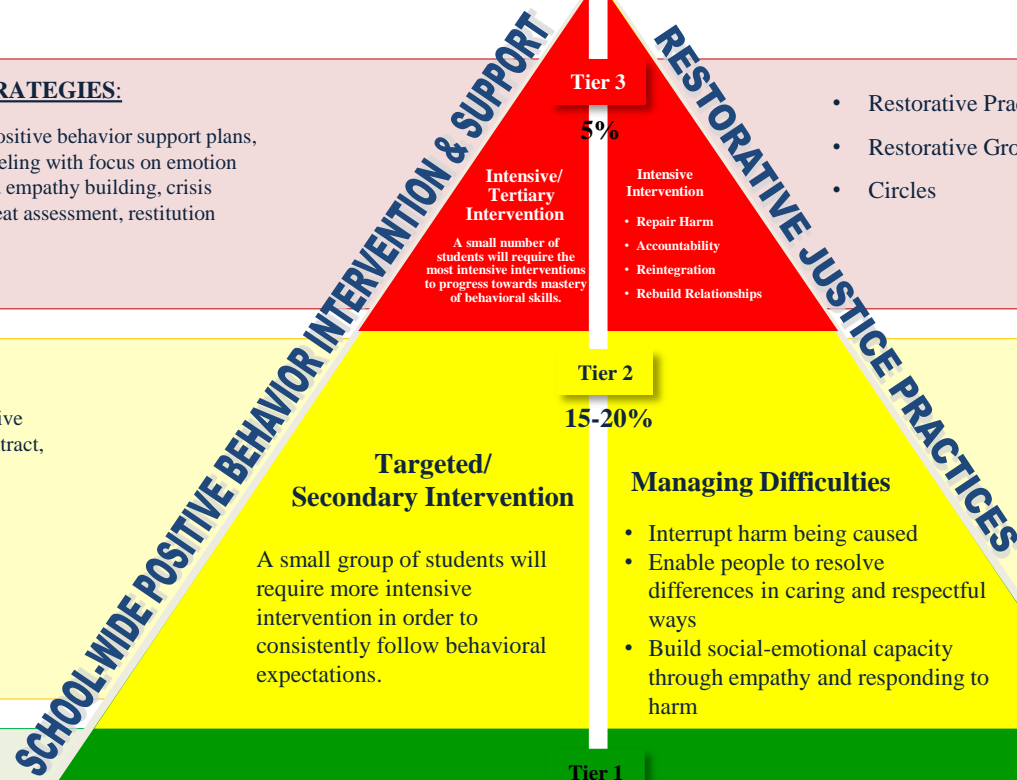


# School-Wide Positive Behavior Intervention and Support and Restorative Justice Practices



**SAMPLE STRATEGIES:**

Individualized positive behavior support plans, individual counseling with focus on emotion management and empathy building, crisis intervention, threat assessment, restitution

**Tier 3**

5%

**Intensive/  
Tertiary  
Intervention**

A small number of students will require the most intensive interventions to progress towards mastery of behavioral skills.

**Intensive Intervention**

- Repair Harm
- Accountability
- Reintegration
- Rebuild Relationships

- Restorative Practices
- Restorative Group Conferences
- Circles

**SAMPLE STRATEGIES:**

Parent/student conference, reflective behavior journaling, behavior contract, small group social skills, emotion management instruction.

**Tier 2**

15-20%

**Targeted/  
Secondary Intervention**

A small group of students will require more intensive intervention in order to consistently follow behavioral expectations.

**Managing Difficulties**

- Interrupt harm being caused
- Enable people to resolve differences in caring and respectful ways
- Build social-emotional capacity through empathy and responding to harm

- Restorative Conversations
- Restorative Dialogue
- Problem Solving Circles
- Hallway Conferences

**SAMPLE STRATEGIES:**

Positive behavior expectations are clearly defined, modeled, and taught, with an opportunity for all students to practice the skills, in all school environments, (e.g. classroom, hallways, cafeteria, etc.). A school-wide system for acknowledging and rewarding positive behavior is implemented, (e.g. “caught being good”).

**Tier 1**

75-80%

**Universal  
(All Students)**

Teaching behavioral expectations to all students in the same manner that any academic subject would be taught, including a reward system for positive behavior.

**School-Wide Prevention Practices**

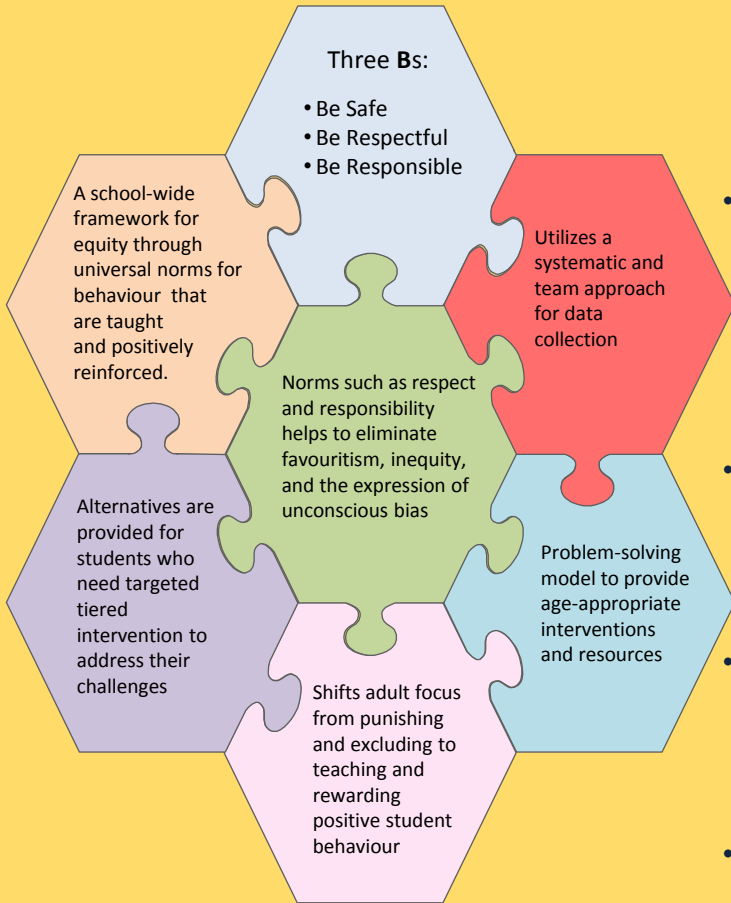
- Develop healthy relationships
- Identify common values and guidelines
- Develop social/emotional understanding/skills
- Promote and strengthen sense of belonging and ownership

- Relational Practices
- Regular Check-Ins
- Routines

## SCHOOL-WIDE POSITIVE BEHAVIOR INTERVENTION & SUPPORT

## How are the models aligned?

## RESTORATIVE JUSTICE PRACTICES



- Both are school-wide models focused on changing school environments to create the conditions needed for learning
- Both are aligned with the **Three-Tiered Framework of Response to Intervention and Instruction (RTI<sup>2</sup>): universal, selected, and targeted/ intensive support.**
- Both are effective strategies to lower discipline referrals by changing adult response to student misconduct
- Both engage students, teachers, parents/guardians and administrators in the process
- Both avoid labeling students
- Both support student achievement and reinforces positive behavior

