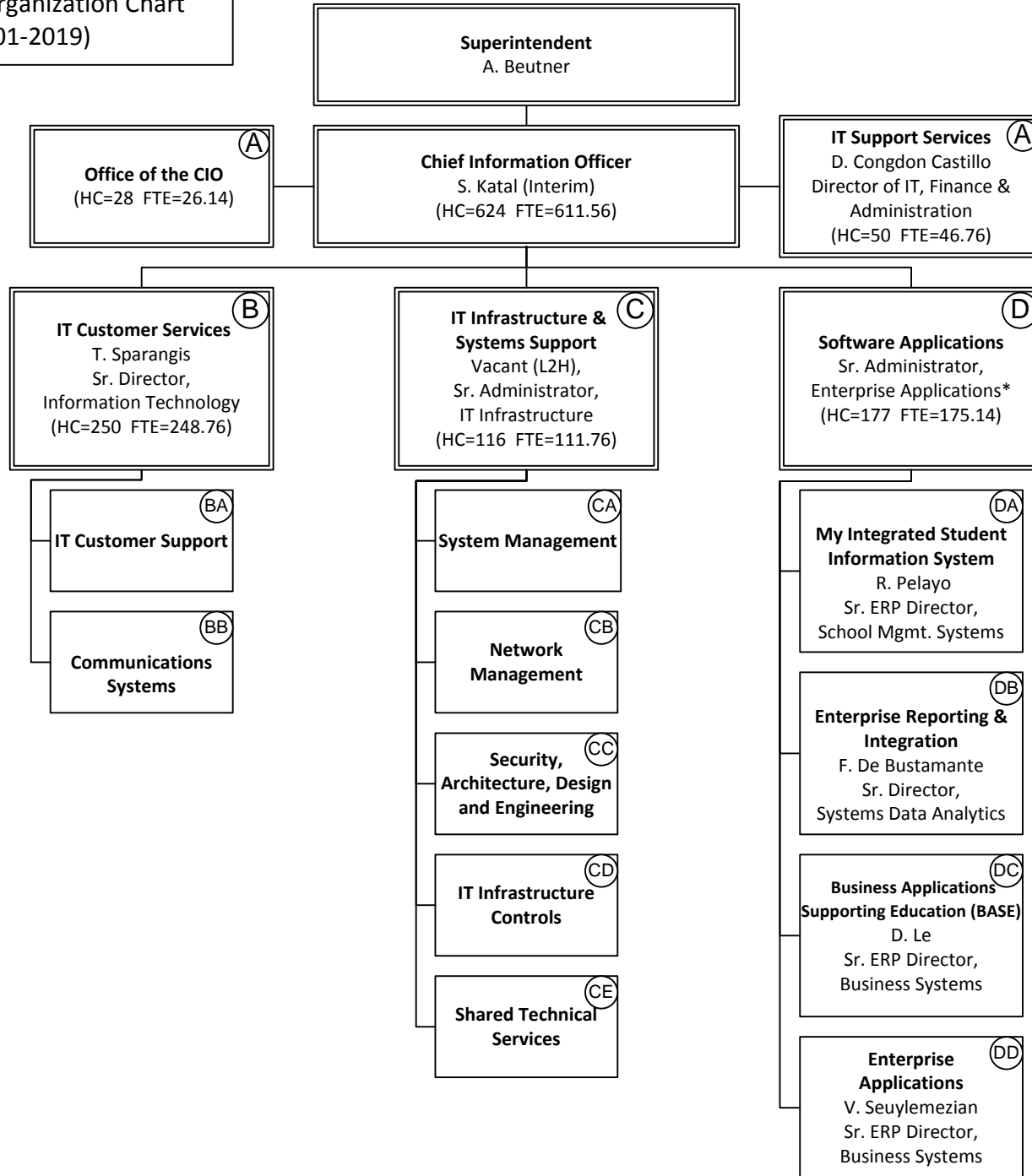




**Information Technology Division**  
 2019-2020 Organization Chart  
 (11-01-2019)

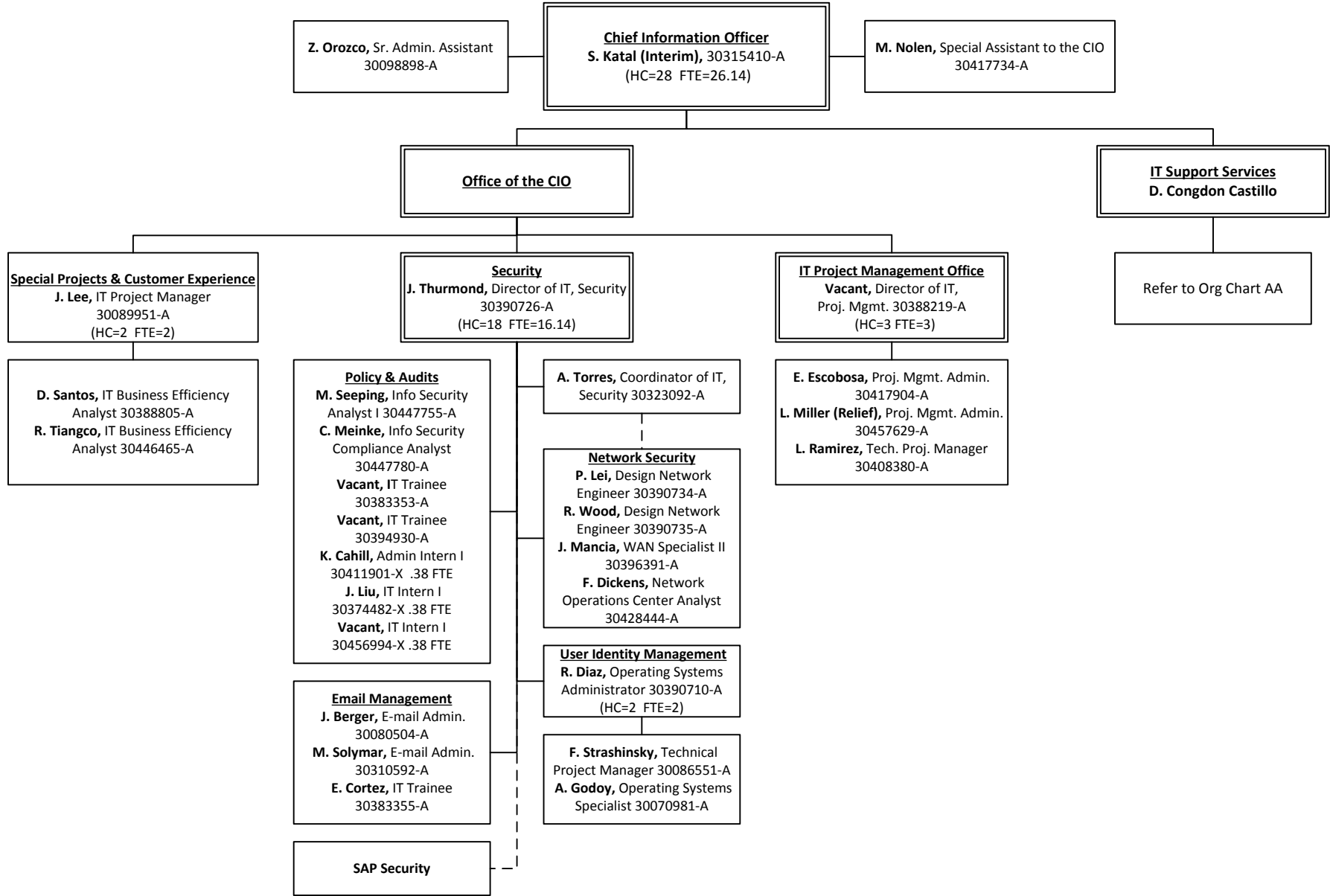


NC = 599.56 FTE  
 C = 12.0 FTE

\* future vacancy, position to be created



**Office of the Chief Information Officer**  
**Location Code: 1004401**  
 2019 – 2020 Organization Chart  
 (11-01-2019)



NC = 26.14 FTE  
 C = 0.0 FTE



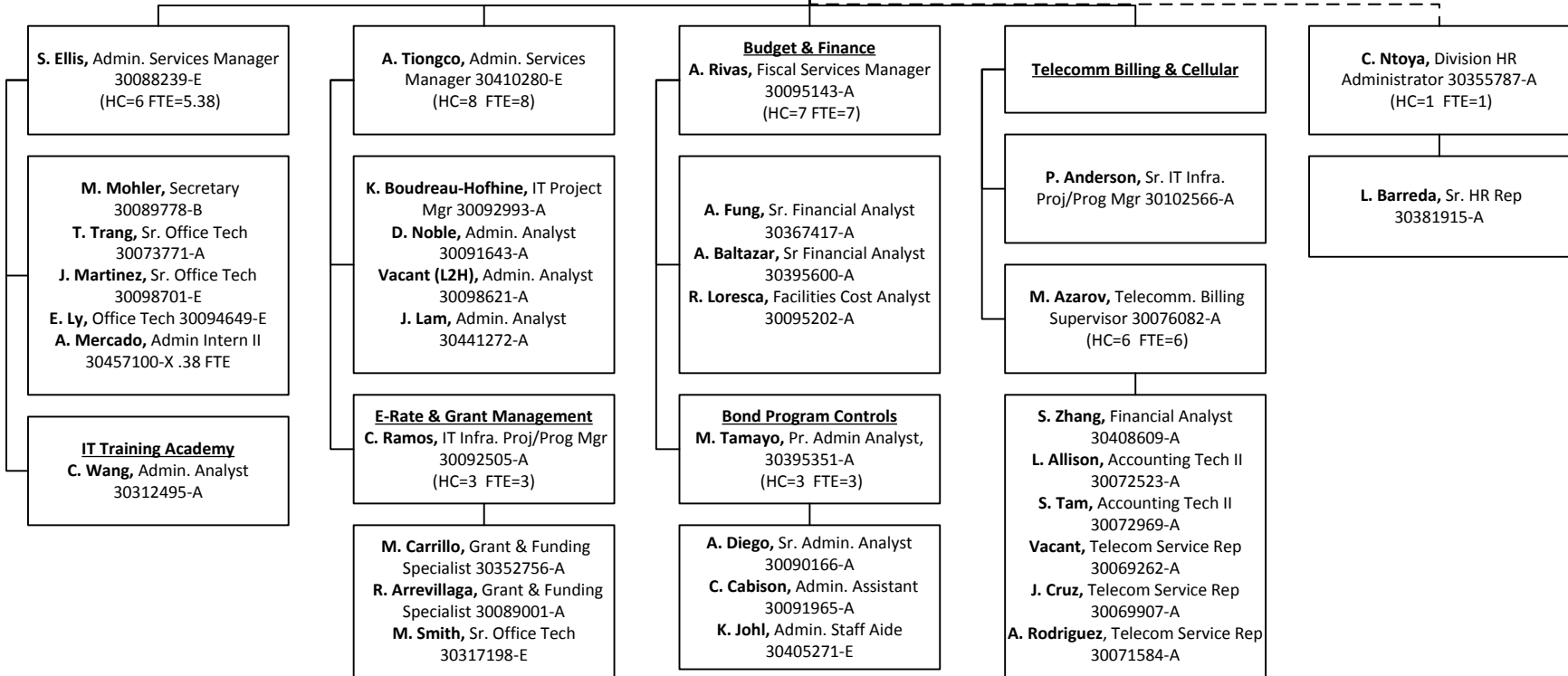
**IT Support Services**  
**Location Code: 1004401**  
 2019 - 2020 Organization Chart  
 (11-01-2019)



**Chief Information Officer**  
**S. Katal (Interim)**

**Director of IT, Finance and Administration**  
**D. Congdon Castillo, 30318460-A**  
 (HC=38 FTE=34.76)

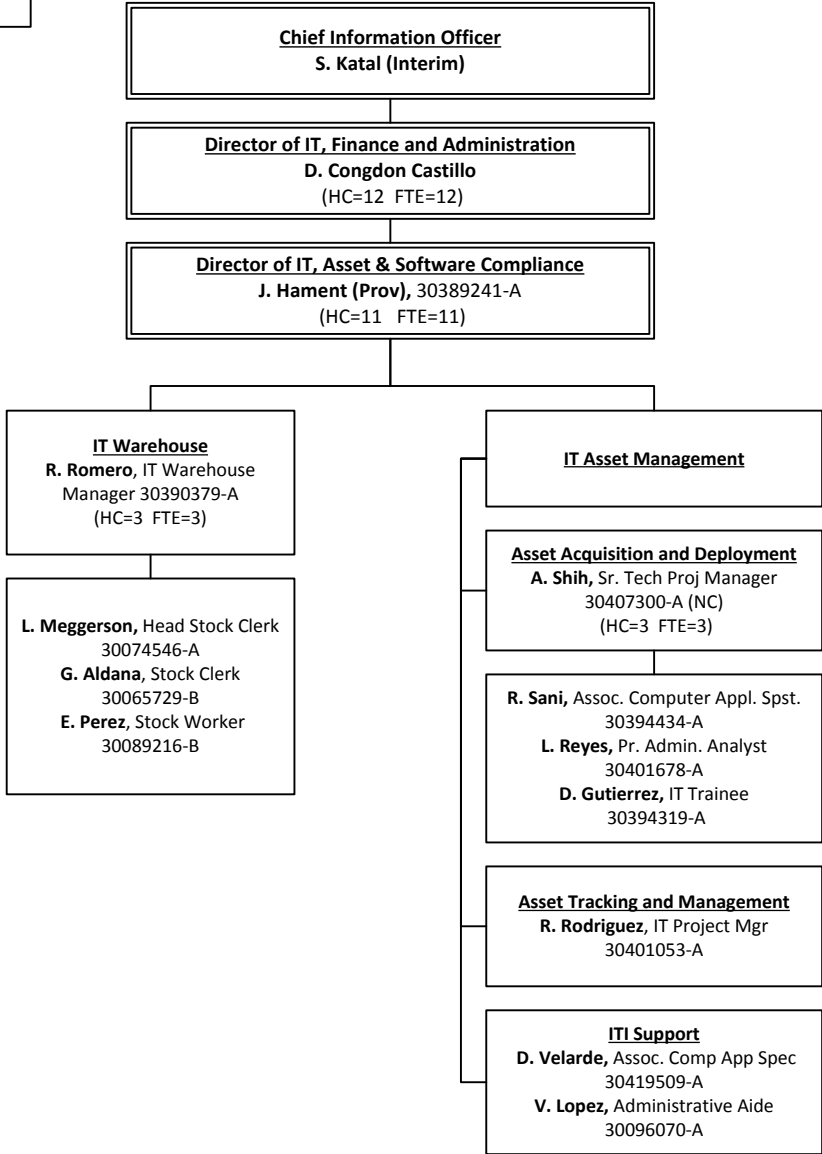
**C. Wang, Admin Services Mgr. 30309651-A**  
**A. Wai, Pr. Admin. Analyst 30367563-A**  
**R. Libao, Accounting Tech II 30097881-A**  
**Vacant, Admin Intern I 30410445-X .38 FTE**



NC = 34.76 FTE  
 C = 0.0 FTE



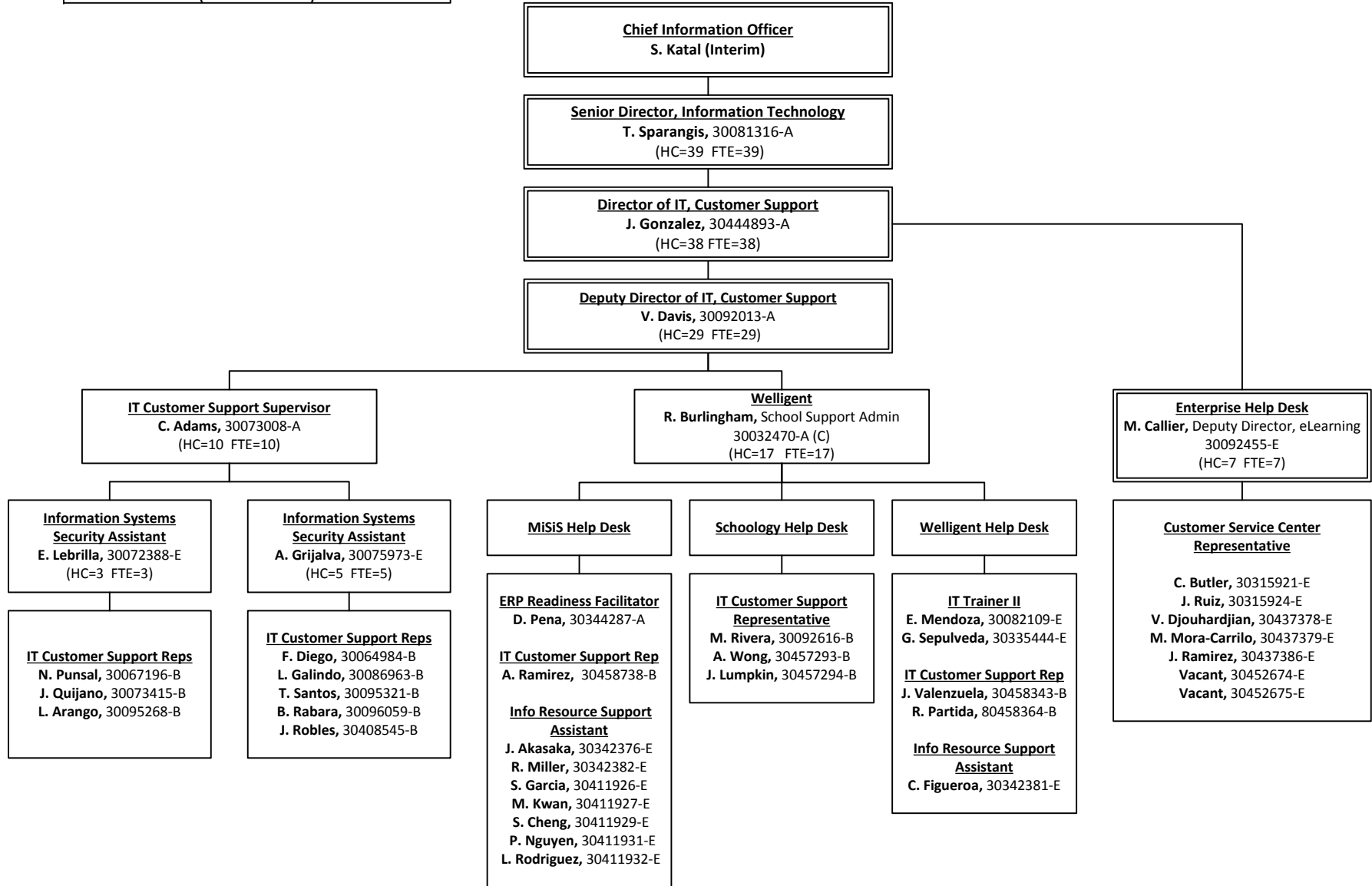
**IT Support Services**  
**Location Code: 1004401**  
 2019 - 2020 Organization Chart  
 (11-01-2019)



NC = 12.0 FTE  
 C = 0.0 FTE



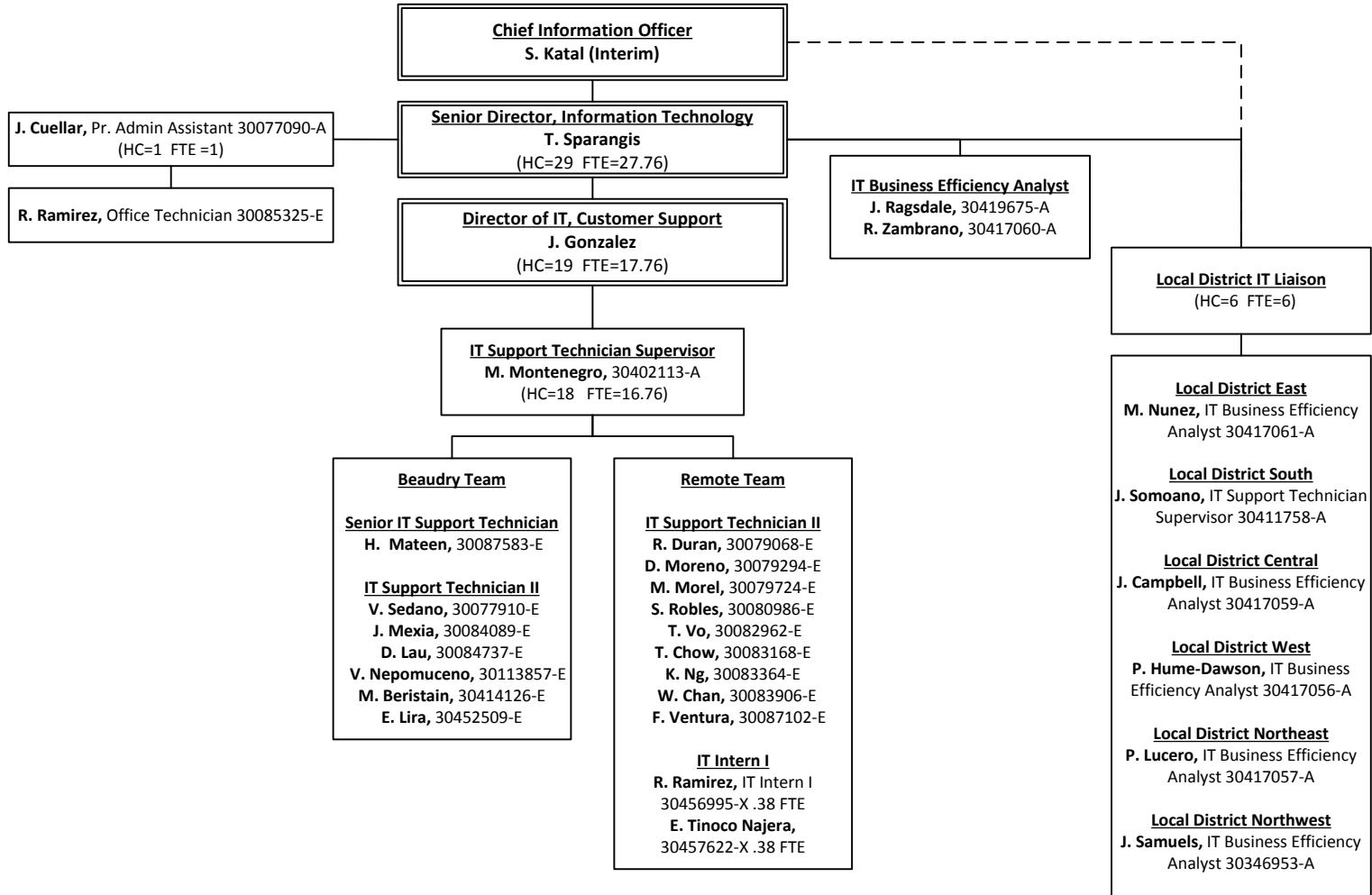
**IT Customer Support  
(Help Desk)**  
**Location Code: 1079501**  
 2019 – 2020 Organization Chart  
 (11-01-2019)



NC = 38.0 FTE  
 C = 1.0 FTE



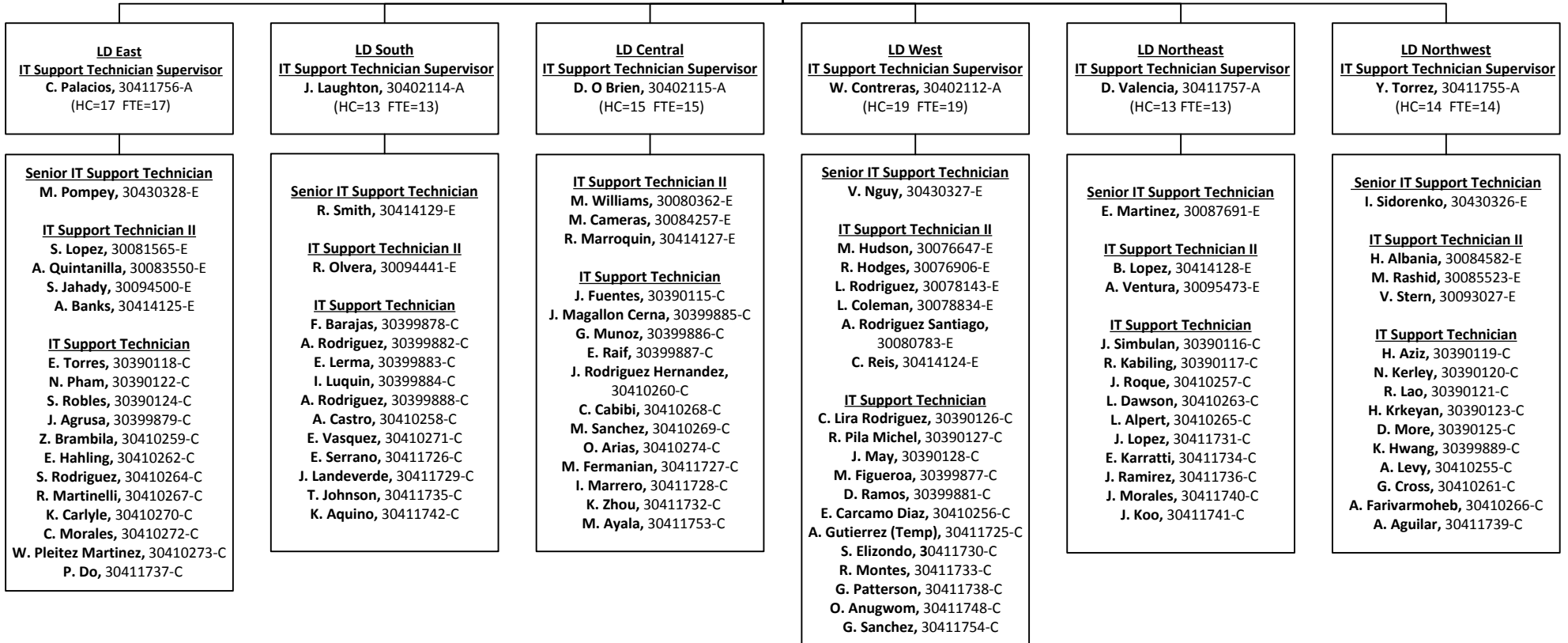
**IT Customer Support  
(Field Techs)**  
**Location Code: 1079501**  
 2019 – 2020 Organization Chart  
 (11-01-2019)



NC = 27.76 FTE  
 C = 0.0 FTE



**IT Customer Support  
(School Support)**  
**Location Code: 1079501**  
 2019 – 2020 Organization Chart  
 (11-01-2019)



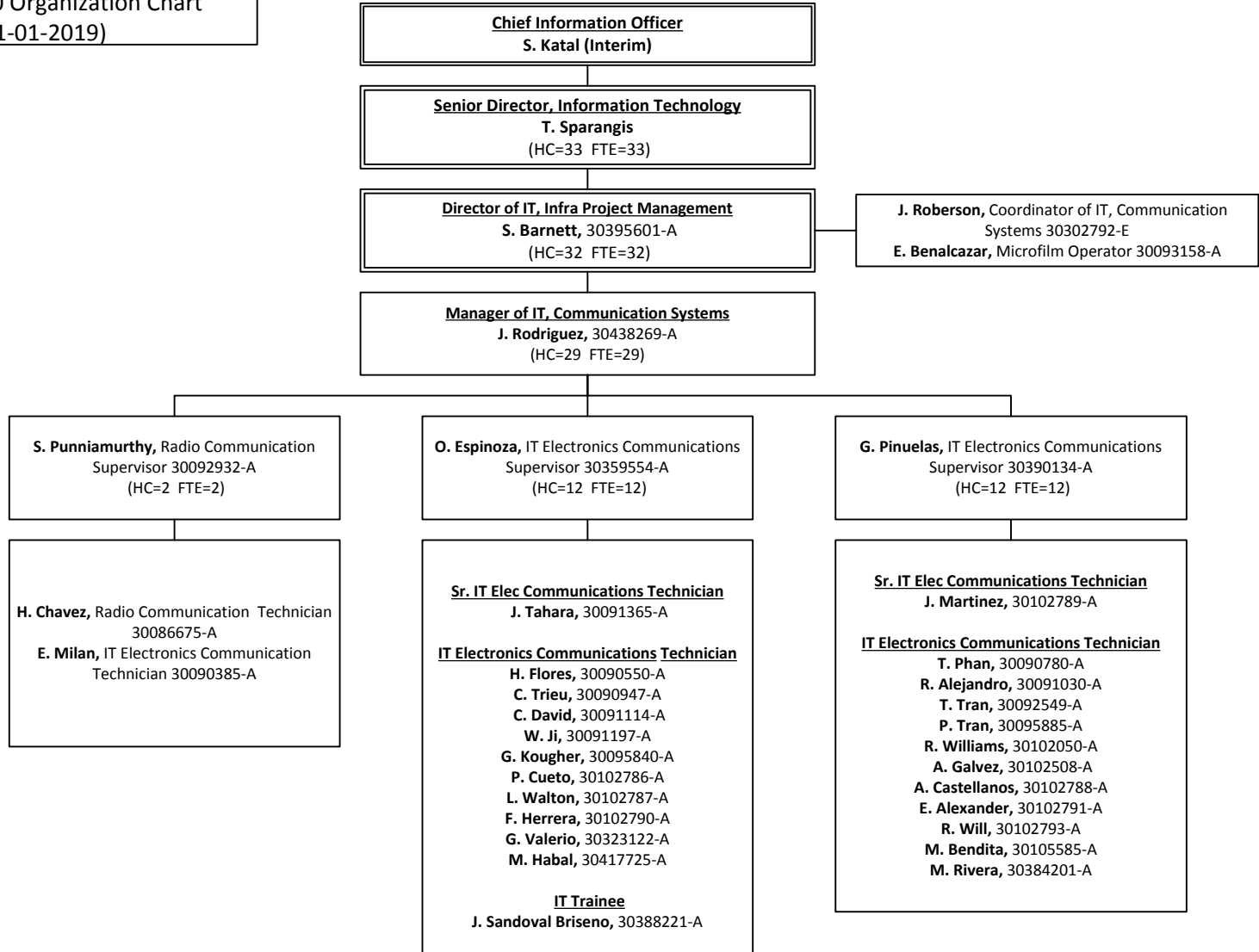
NC = 98.0 FTE  
C = 0.0 FTE



**Communications Systems  
(Repair)**

**Location Code: 1078701**

2019 – 2020 Organization Chart  
(11-01-2019)



NC = 33.0 FTE  
C = 0.0 FTE

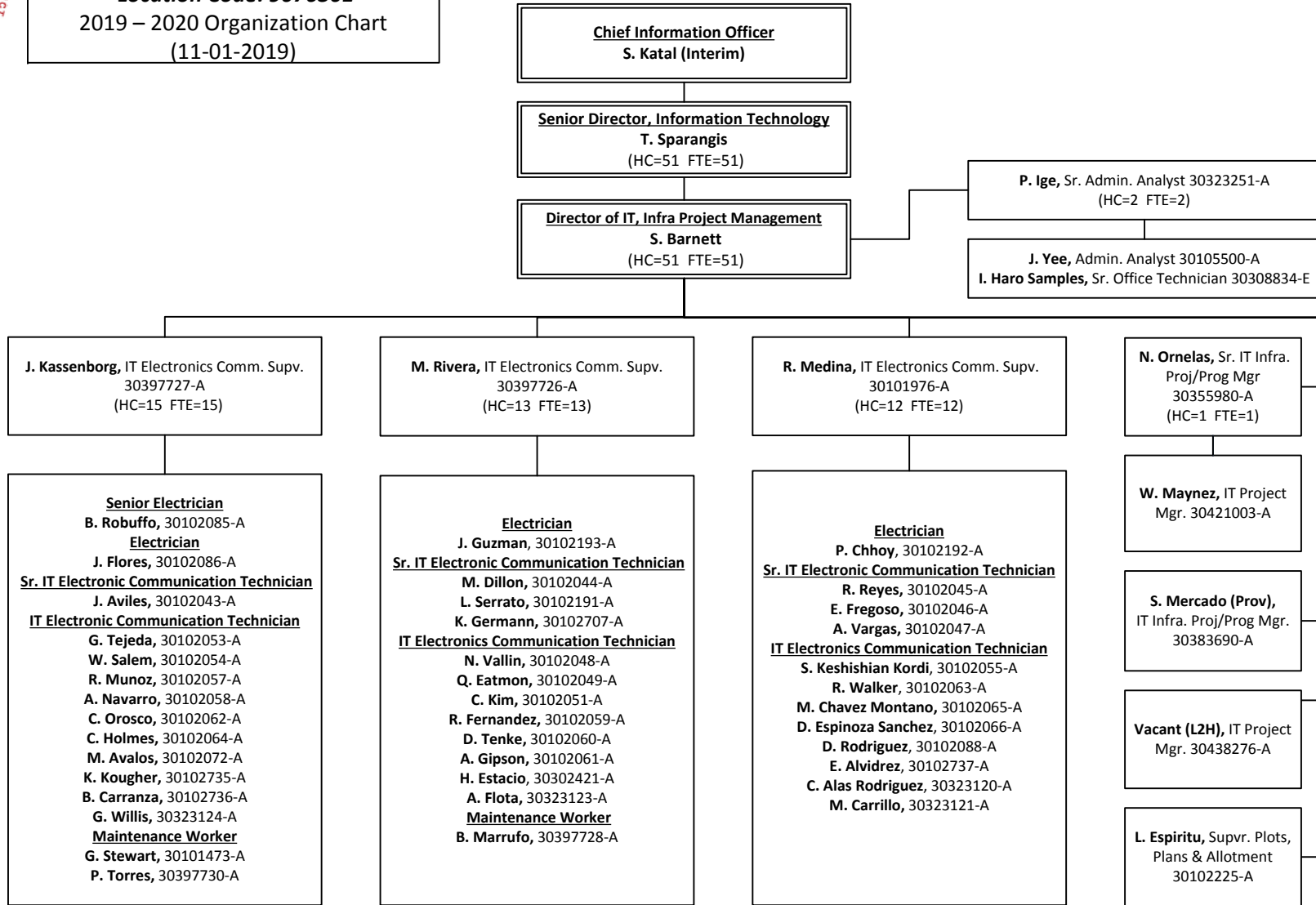




**Communications Systems  
(Installation)**

**Location Code: 9076301**

**2019 – 2020 Organization Chart  
(11-01-2019)**



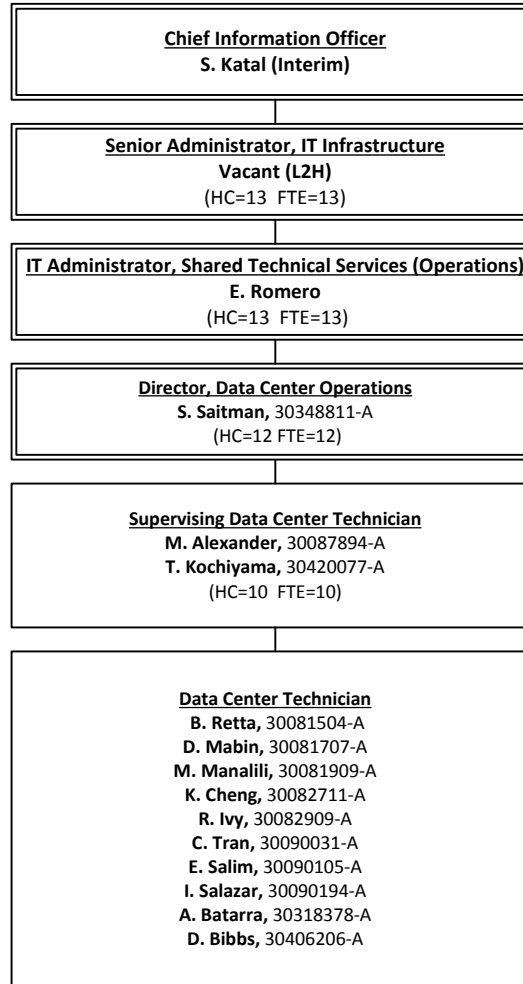
NC = 51.0 FTE  
C = 0.0 FTE



**System Management  
(Data Center Operations)**

**Location Code: 1078901**

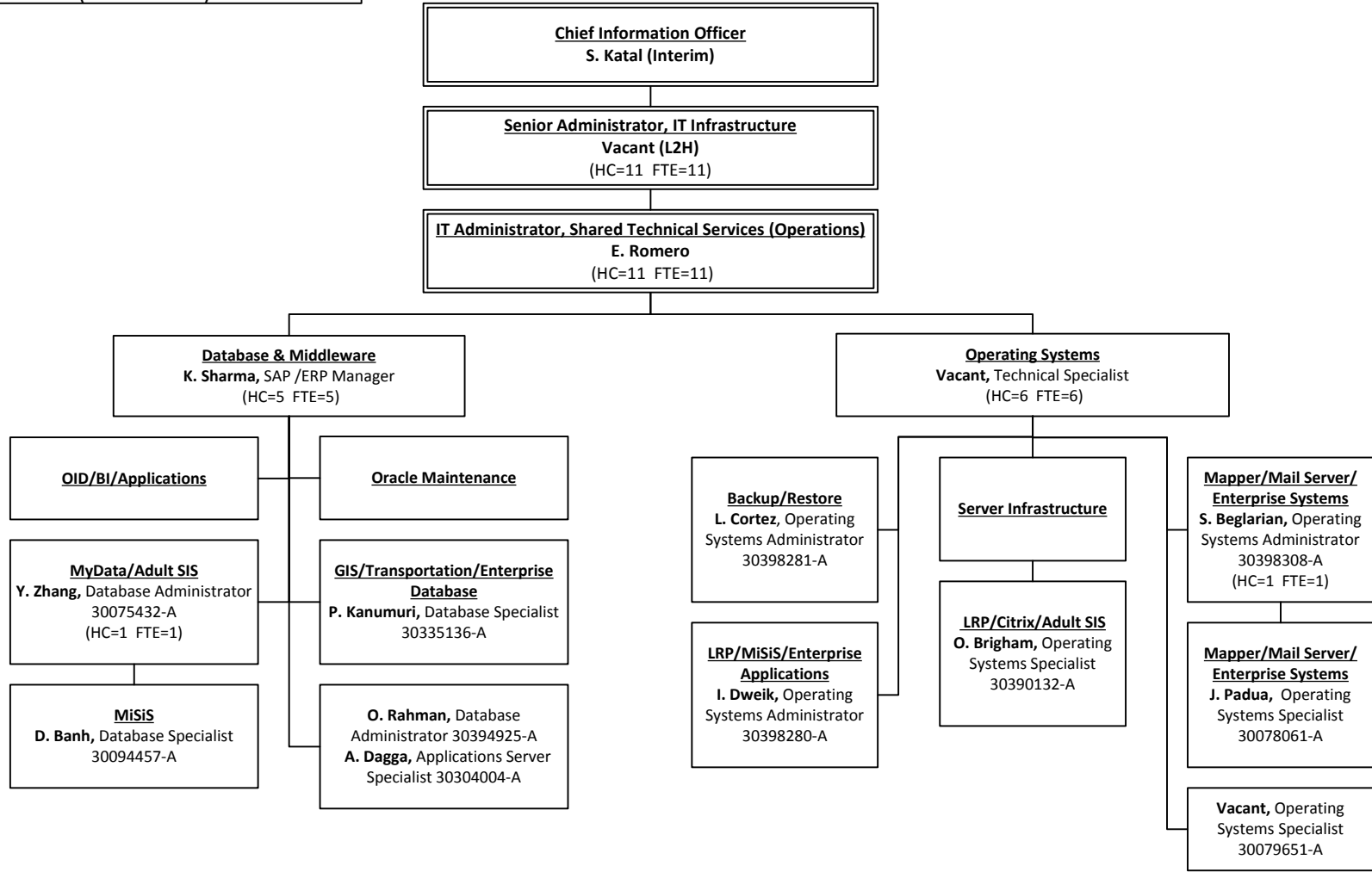
**2019 – 2020 Organization Chart  
(11-01-2019)**



NC = 13.0 FTE  
C = 0.0 FTE



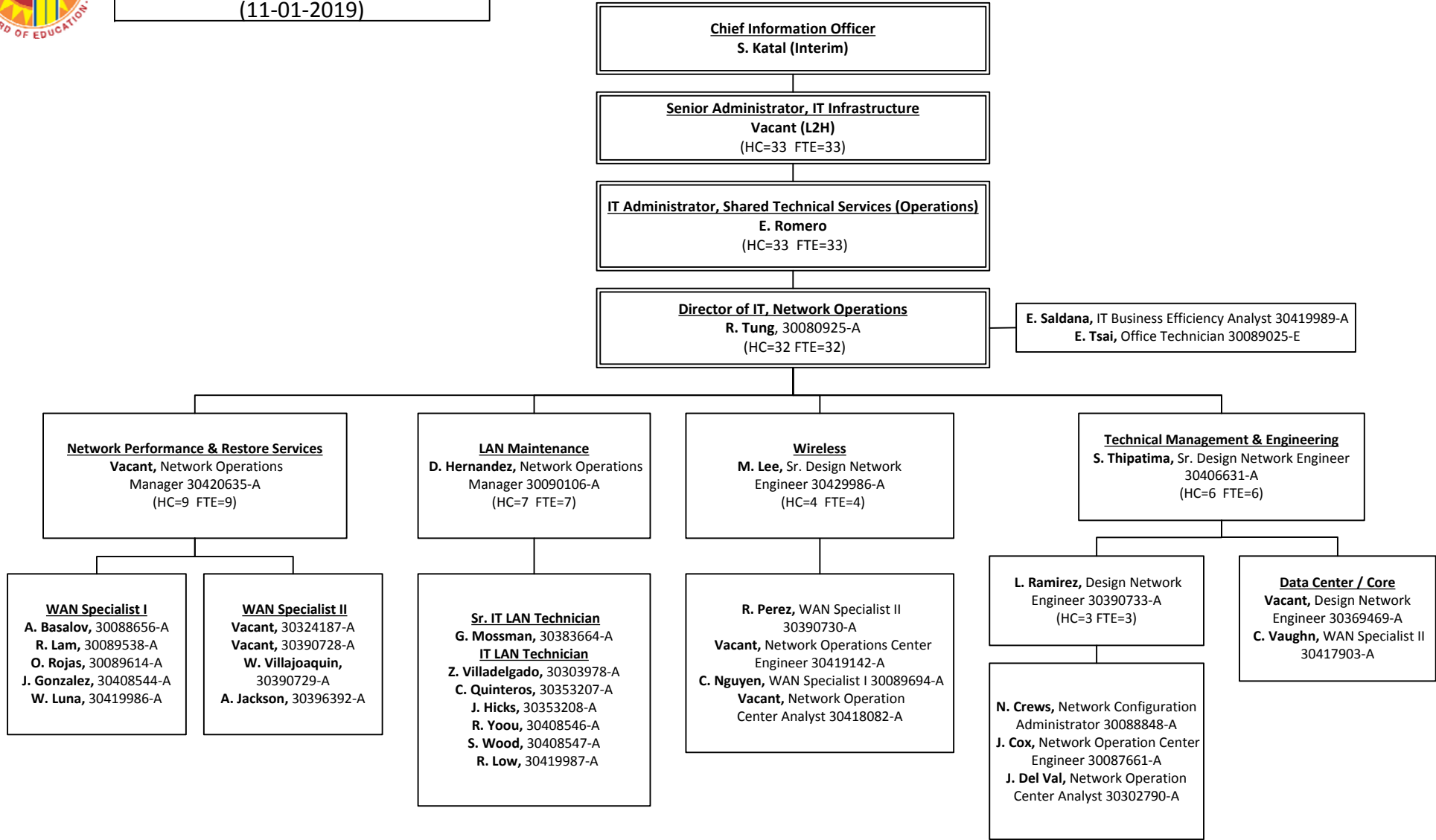
**System Management**  
**(System Support & Continuity)**  
**Location Code: 1084001**  
 2019 – 2020 Organization Chart  
 (11-01-2019)



NC = 11.0 FTE  
 C = 0.0 FTE



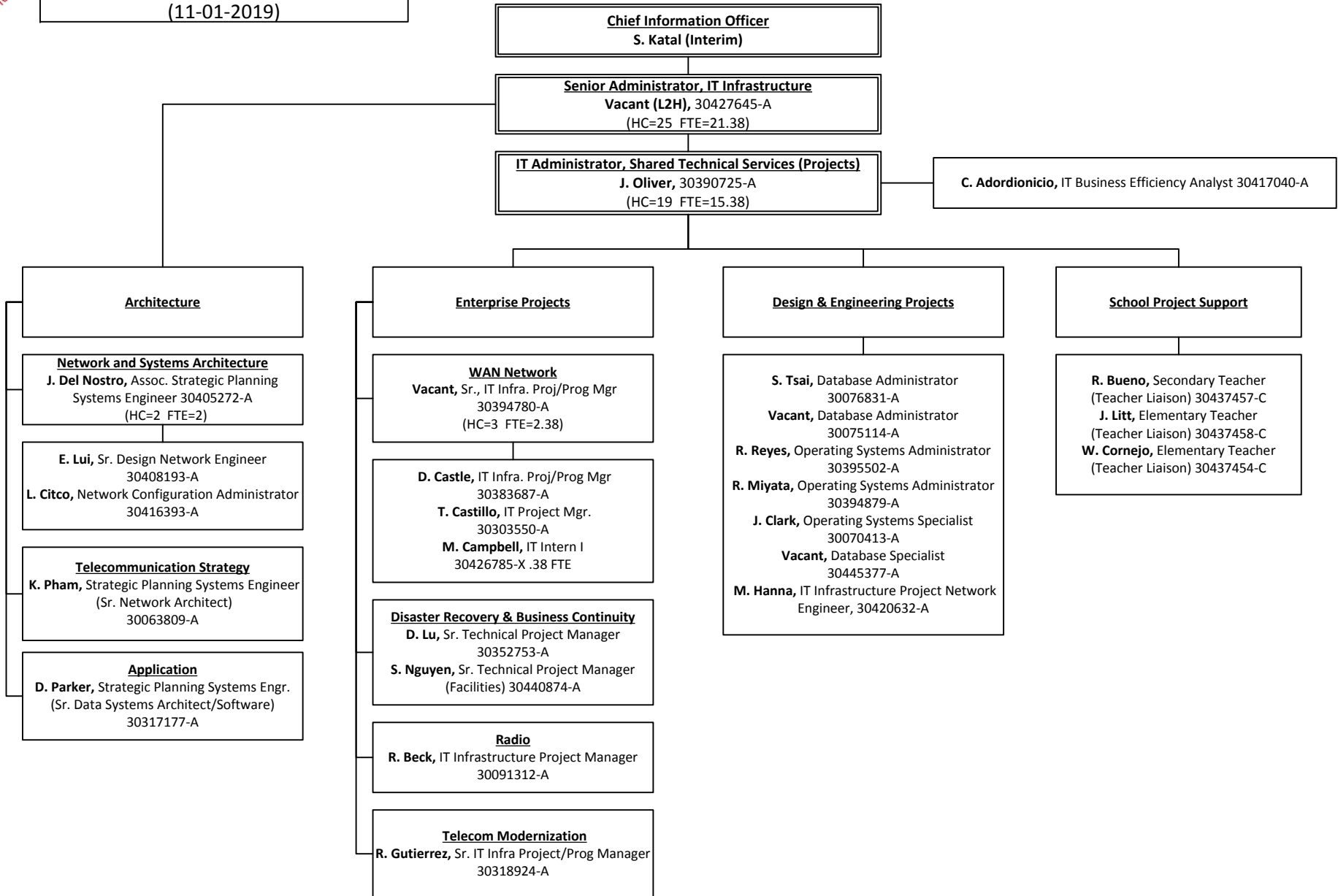
**Network Management**  
**Location Code: 1100201**  
 2019 – 2020 Organization Chart  
 (11-01-2019)



NC = 33.0 FTE  
 C = 0.0 FTE



**Security, Architecture, Design & Engineering (SADE)**  
**Location Code: 1079601**  
 2019 – 2020 Organization Chart  
 (11-01-2019)



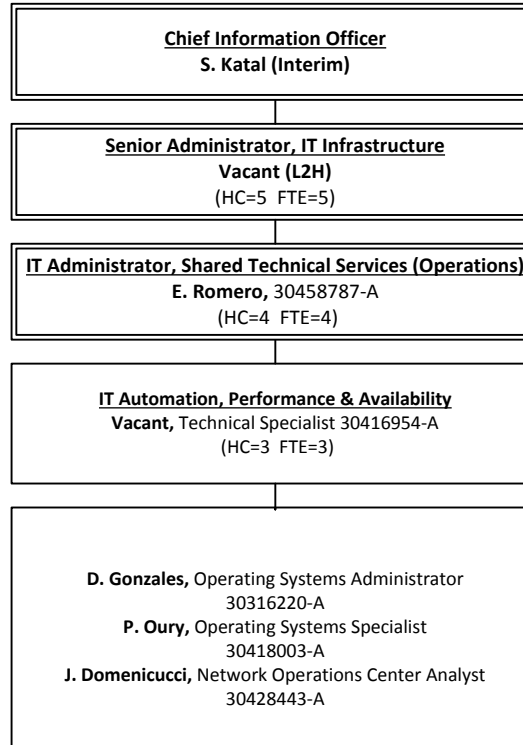
NC = 21.38 FTE  
 C = 0.0 FTE



**IT Infrastructure Controls  
(SADE)**

**Location Code: 1079601**

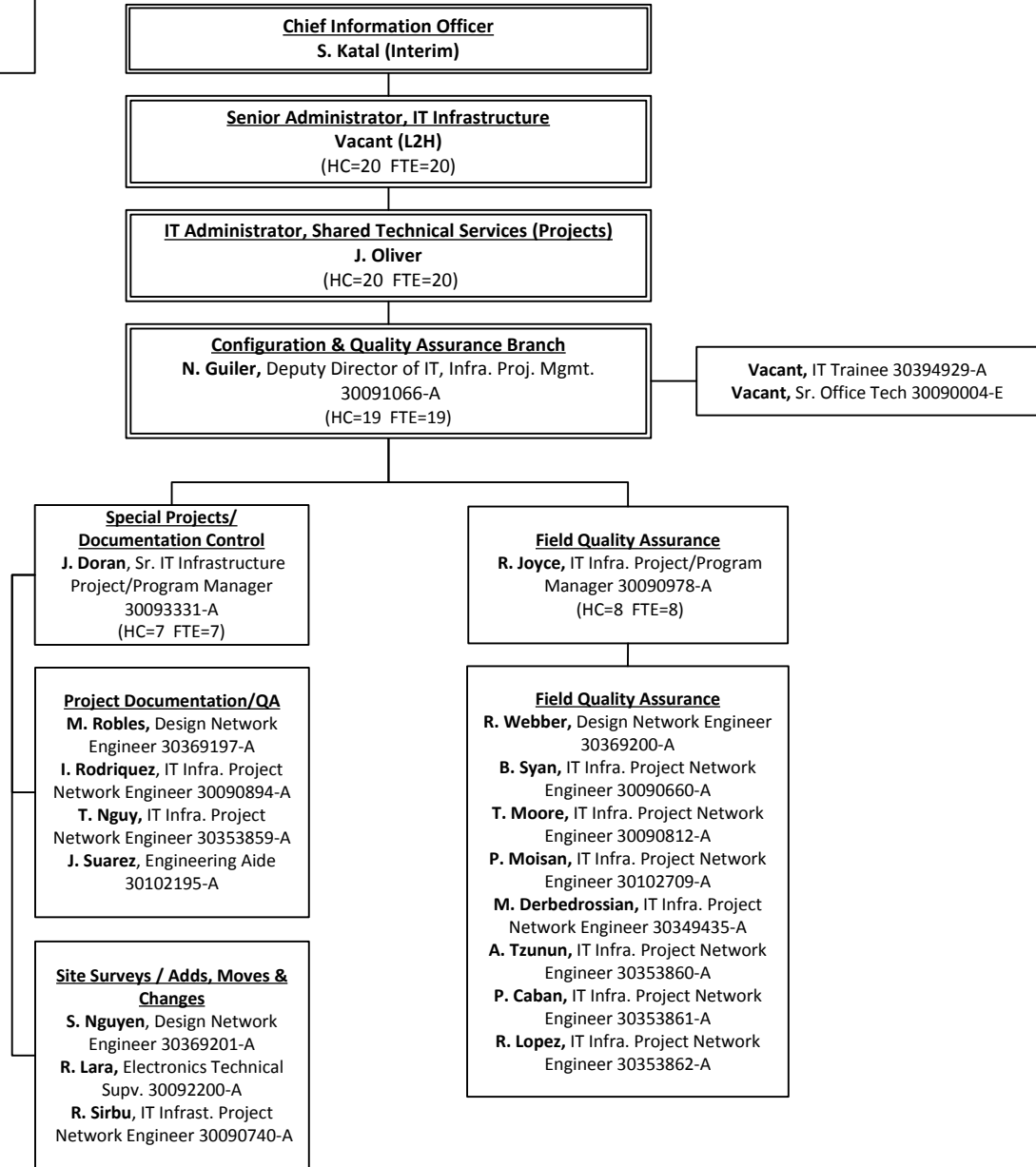
**2019 – 2020 Organization Chart  
(11-01-2019)**



NC = 5.0 FTE  
C = 0.0 FTE



**IT Infrastructure Controls**  
**(Design & Quality Assurance-JC)**  
**Location Code: 9052101**  
 2019 – 2020 Organization Chart  
 (11-01-2019)



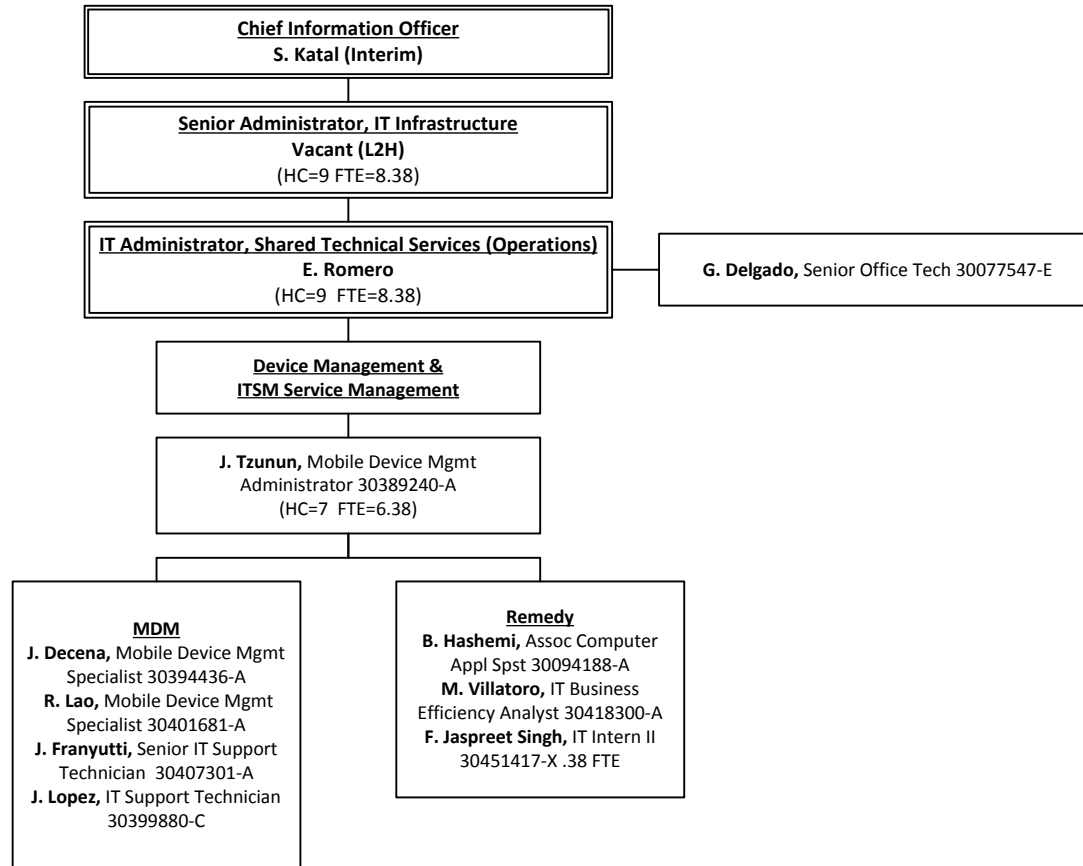
NC = 20.0 FTE  
 C = 0.0 FTE



**Shared Technical Services**

**Location Code: 1083901**

2019 – 2020 Organization Chart  
(11-01-2019)

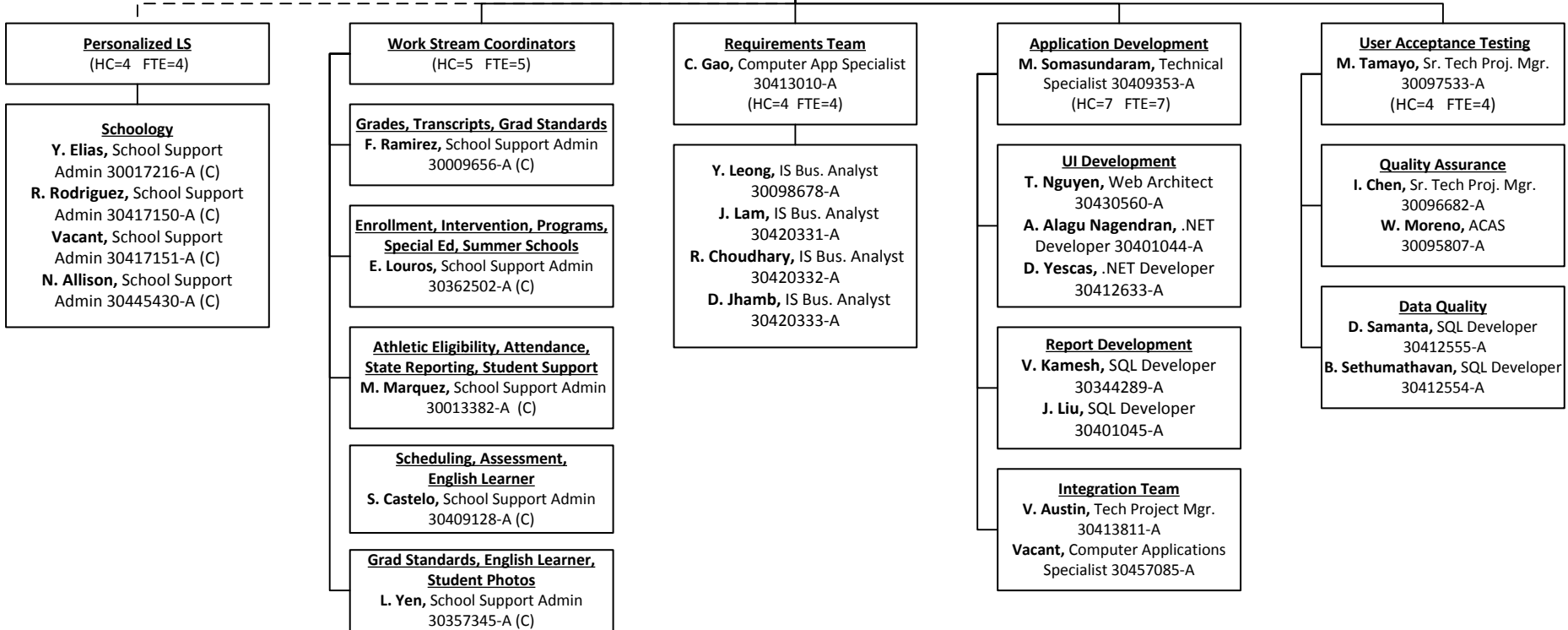
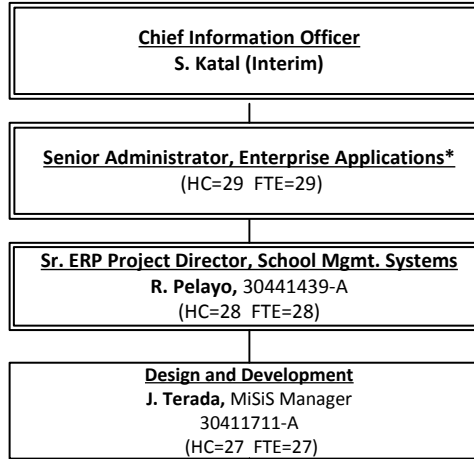


NC = 8.38 FTE  
C = 0.0 FTE





**My Integrated Student Information Systems (MiSiS)**  
**Location Code: 1079401**  
 2019 – 2020 Organization Chart  
 (11-01-2019)

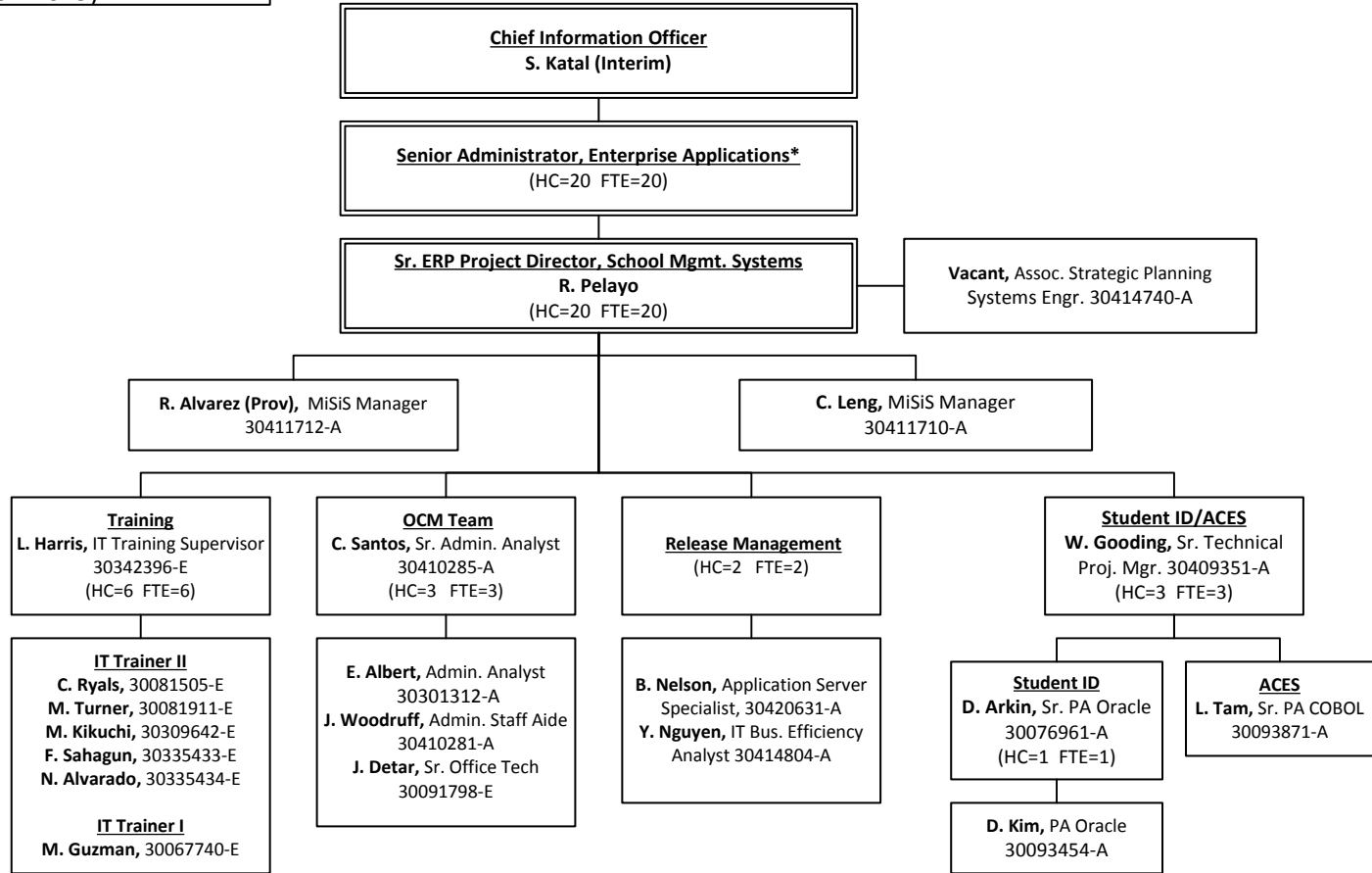


NC = 20.0 FTE  
C = 9.0 FTE

\* future vacancy, position to be created



**My Integrated Student Information Systems (MiSiS)**  
**Location Code: 1079401**  
 2019 – 2020 Organization Chart  
 (11-01-2019)

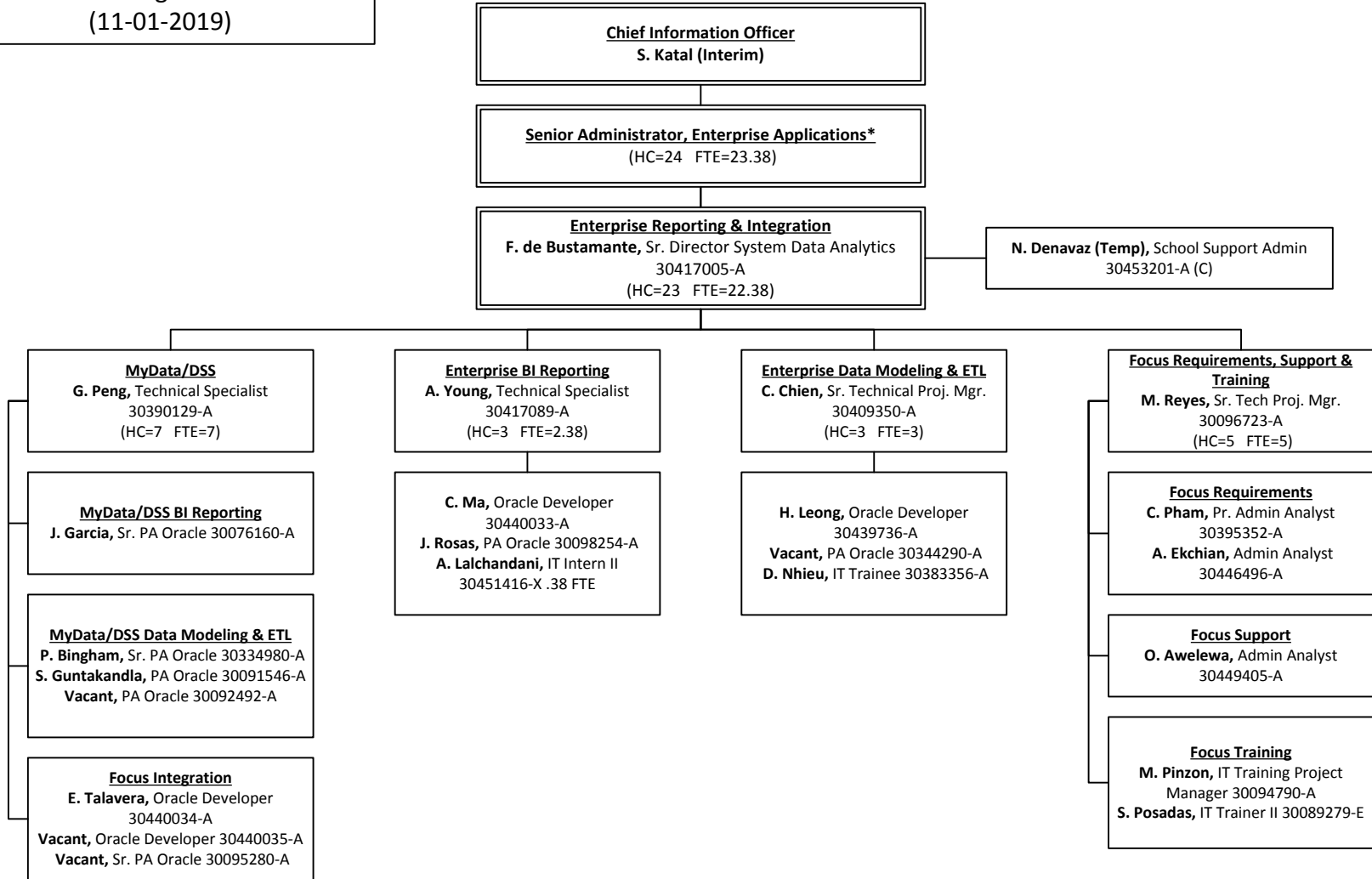


NC = 20.0 FTE  
 C = 0.0 FTE

\* future vacancy,  
 position to be created



**Enterprise Reporting & Integration**  
**Location Code: 1078501**  
 2019 – 2020 Organization Chart  
 (11-01-2019)

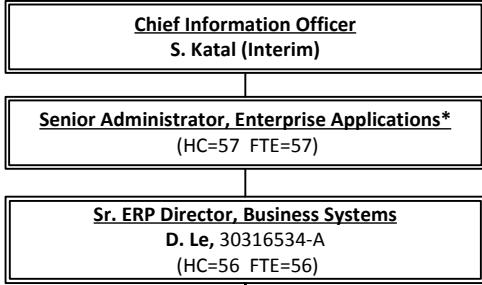


NC = 22.38 FTE  
 C = 1.0 FTE

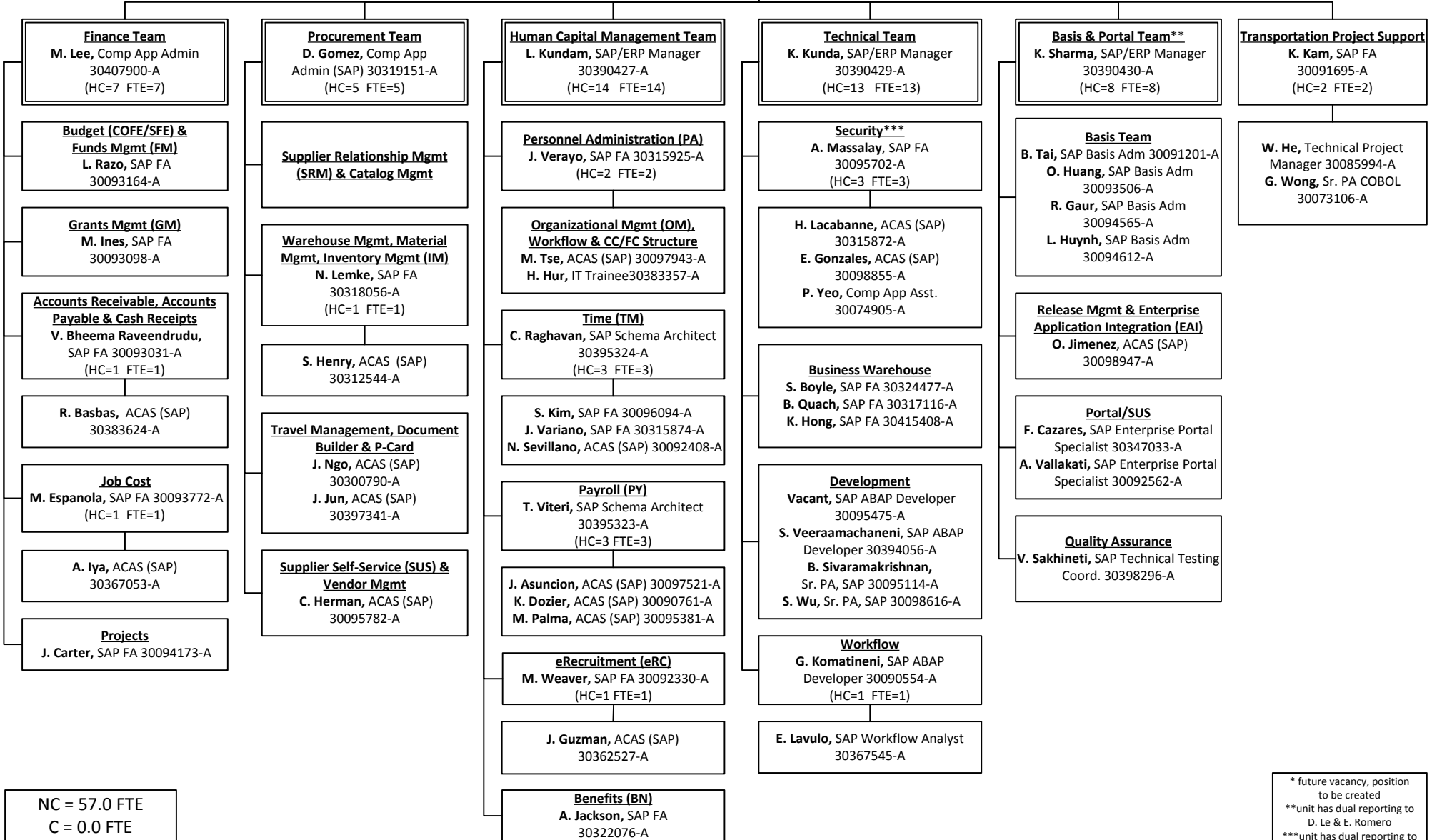
\* future vacancy,  
 position to be created



**Business Applications Supporting Education (BASE)**  
**Location Code: 1079001**  
 2019 – 2020 Organization Chart  
 (11-01-2019)



E. Mayer, Sr. Office Tech 30368551-E



NC = 57.0 FTE  
C = 0.0 FTE

\* future vacancy, position to be created  
 \*\*unit has dual reporting to D. Le & E. Romero  
 \*\*\*unit has dual reporting to K. Kunda & J. Thurmond



**Enterprise Applications**  
**Location Code: 1148601**  
 2019 – 2020 Organization Chart  
 (11-01-2019)

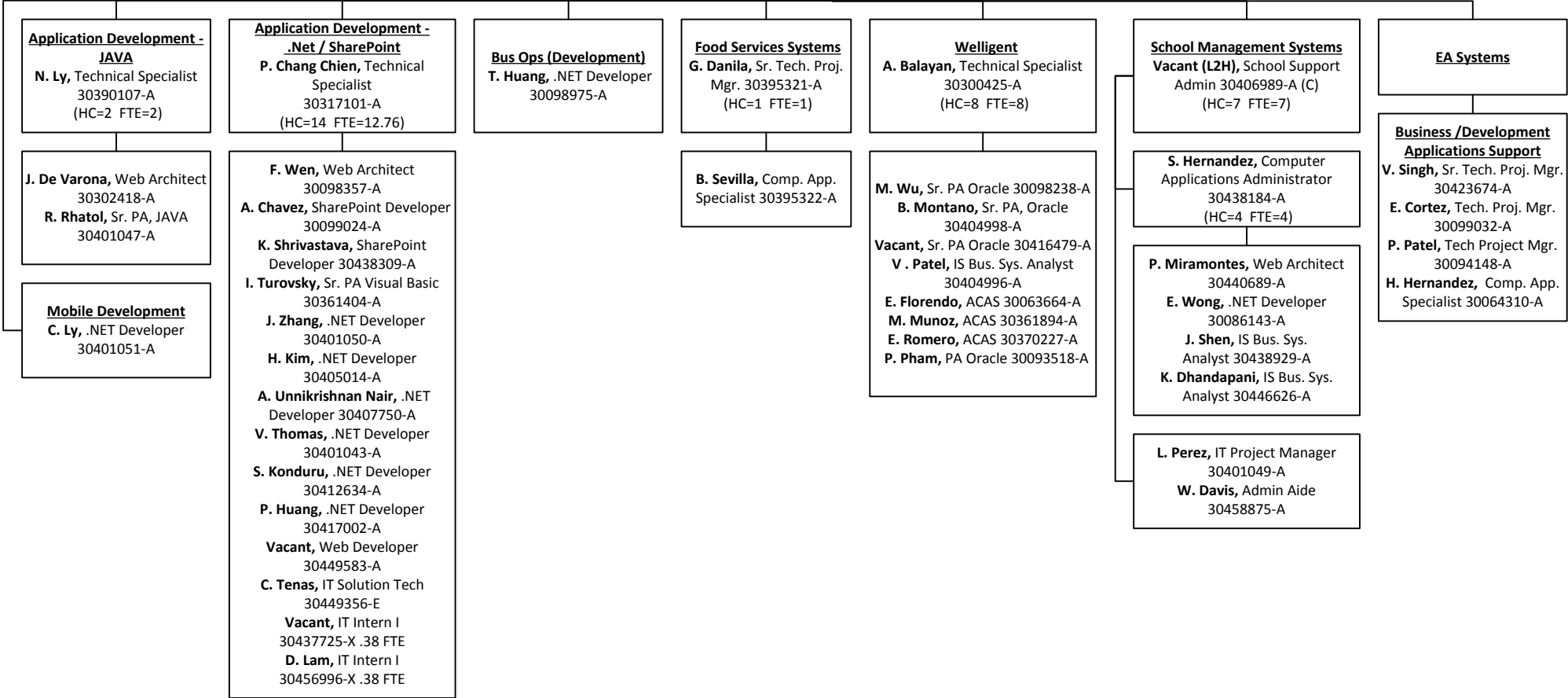
**Chief Information Officer**  
**S. Katal (Interim)**

**Senior Administrator, Enterprise Applications\***  
 (HC=47 FTE=45.76)

**Senior ERP Director, Business Systems**  
**V. Seuylemezian, 30419958-A**  
**Senior ERP Director, School Mgmt Systems**  
**Vacant, 30441515-A**  
 (HC=45 FTE=43.76)

**Y. Pujol, Pr. Admin. Assistant 30368609-A**  
 (HC=1 FTE=1)

**A. Pelayo, Sr. Office Technician**  
 30092821-E



NC = 44.76 FTE  
 C = 1.0 FTE

\* future vacancy, position to be created