



**iSTAR  
ANNUAL  
REPORT  
2014-2015**



**LOS ANGELES UNIFIED SCHOOL DISTRICT**

# TABLE OF CONTENTS

<b>01</b>	Message from Assistant Superintendent of School Operations
<b>02</b>	Districtwide iSTAR Summary
<b>03</b>	Top Issues By School Type
<b>04</b>	Non-school Locations
<b>05</b>	Burglary, Theft, and Related Issue Types
<b>06</b>	Vehicle Collisions Injuries and Accidents
<b>07</b>	Medical Incidents
<b>08</b>	Summary of All Issues by Type
<b>09</b>	Summary of All Issues by Type, Continued

July 31, 2015

**L**earning, like photosynthesis, requires only a few key elements. But growth can often be impeded by outside environmental factors. The Los Angeles Unified School District, its schools and employees often act as a second line of defense for nurturing the whole student: children receive meals in the classroom; at-risk youth find safe refuge on school grounds; students and family members receive health services at community clinics.

iSTAR is an online reporting system launched in 2010 to record incidents that affect the District, its students, employees, and surrounding communities. For the 2014-2015 school year, iSTAR recorded that Districtwide the average school day consisted of 35 injuries, 24 suicidal behavior incidents and 17 fights or physical aggression acts.

School Operations continues to use iSTAR to monitor schools and offices in real-time. The aggregate data are also analyzed to identify, address and prevent problems. This year's annual report highlights issue types that affect every one of the almost one million student and staff members that make up the LAUSD family. The findings underscore that health and safety are prerequisites to a conducive learning environment.

A handwritten signature in black ink that reads "Earl R. Perkins". The signature is written in a cursive style with a large, stylized initial "E".

Earl R. Perkins  
Assistant Superintendent  
School Operations

## Reports and Issues by Division and Board District

	Reports	Issues
ESC North	6,683	7,686
ESC South	5,296	6,149
ESC East	4,654	5,391
ESC West	4,286	5,003
ISIC	5,583	6,893
Options	281	339
Adult Ed	237	269
Early Ed	546	586
Charter	77	114
Non-School	1,314	1,380
<b>Grand Total</b>	<b>28,957</b>	<b>33,810</b>

Bd. Dist.	Reports	Issues
One	3,903	4,702
Two	4,704	5,526
Three	3,197	3,635
Four	2,623	3,135
Five	4,106	4,669
Six	4,227	4,916
Seven	4,882	5,846

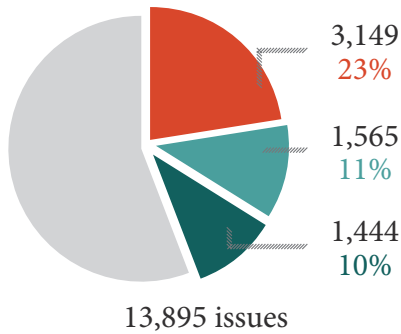
Aggregate of numbers above don't match aggregate of those to the left because one charter school is outside board district boundaries.

## Top Ten Issue Types Districtwide

Injury	6,722
Suicidal Behavior	4,607
Fighting/Physical Aggression	3,103
Accident	2,805
Medical	2,344
Inappropriate Conduct	1,780
Threat	1,318
Sex Crime/Inappropriate Sexual Behavior	1,163
Weapons	839
Illegal/Controlled Substance	746

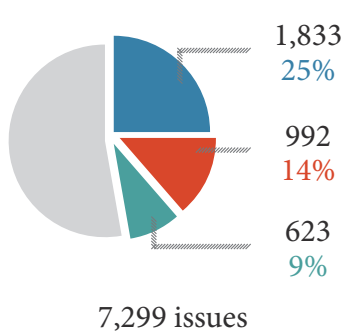
# Top Issue Types By School Type

## Elementary Schools



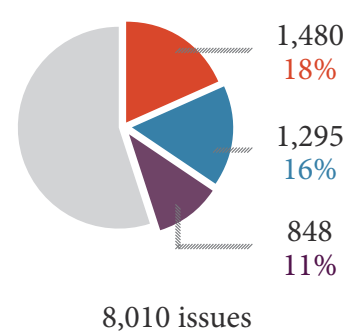
1. Injury •
2. Fighting/Physical Aggression •
3. Accident •

## Middle Schools



1. Suicidal Behavior •
2. Injury •
3. Fighting/Physical Aggression •

## High Schools



1. Injury •
2. Suicidal Behavior •
3. Medical •

NOTE: Sizes of pie charts are relational to school types in demarcated group; gray denotes all other issue types.

## Span Schools | 1,082 issues

1. Injury / 235 or 22%
2. Suicidal Behavior / 188 or 17%
3. Fighting/Physical Aggression / 79 or 7%



## Options Schools | 663 issues

1. Illegal/Controlled Substance / 86 or 13%
2. Suicidal Behavior / 67 or 10%
3. Fighting/Physical Aggression / 66 or 10%



## Special Education | 465 issues

1. Injury / 149 or 32%
2. Medical / 65 or 14%
3. Accident / 63 or 14%



## Early Education | 586 issues

1. Injury / 180 or 31%
2. Accident / 137 or 23%
3. Inappropriate Conduct / 77 or 13%



## Adult Education | 268 issues

1. Injury / 72 or 27%
2. Medical / 50 or 19%
3. Accident / 29 or 11%



NOTE: Sizes of pie charts are relational to other school types in demarcated group; gray denotes all other issue types.

## LAUSD Schools and Centers

Primary School Centers	18
Elementary Schools *	503
Middle Schools *	136
Senior High Schools *	158
Multi-level Schools	21
Magnet Schools	34
Option Schools	55
Home/Hospital	1
Centers for Advanced Transition Skills	1
Special Education Schools	13
Charter Schools, Independent	207
<b>K-12 Subtotal</b>	<b>1,147</b>
Community Adult Schools	10
Regional Occupational Centers/Programs	1
Alternative Education Work Centers	26
Early Education Centers	86
<b>Grand Total</b>	<b>1,270</b>

\* Count of affiliated magnet centers are included with school level statistics.

Per LAUSD Fingertip Facts 2014-2015

# NON-SCHOOL LOCATIONS

The Los Angeles Unified School District services 710 square miles of Southern California; its physical boundaries contain approximately 4.8 million residents. The District is the second largest employer in Los Angeles County and employs nearly 60,000 individuals. More than 55 percent of the workforce is certificated, and mostly school-based, including teachers, counselors, and nurses. Classified personnel make up the other 45 percent. This group accounts for the majority of non-school-based employees and includes staff from facilities, legal, financial, and information technology departments.

In the 2014-15 school year, iSTAR recorded 1,314 reports covering 1,380 issues for the central offices and other non-school locations. These numbers account for less than five percent of all iSTAR activity.

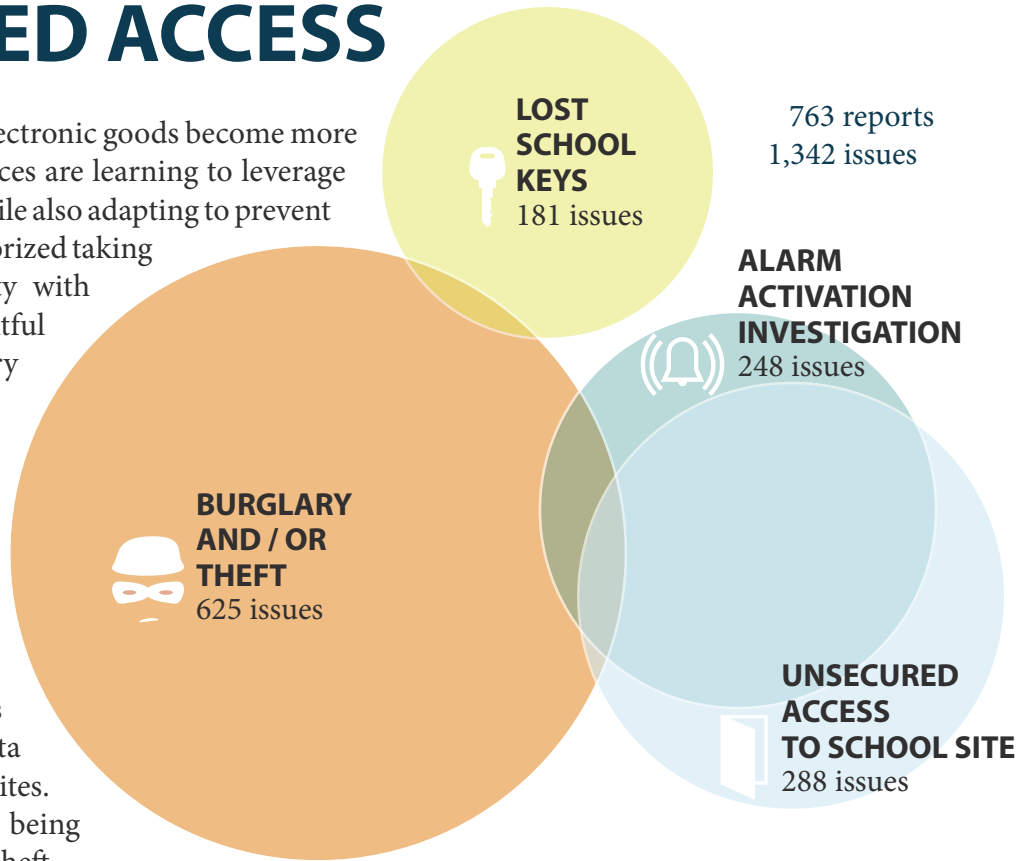
## Top Ten Issue Types For Non-School Locations



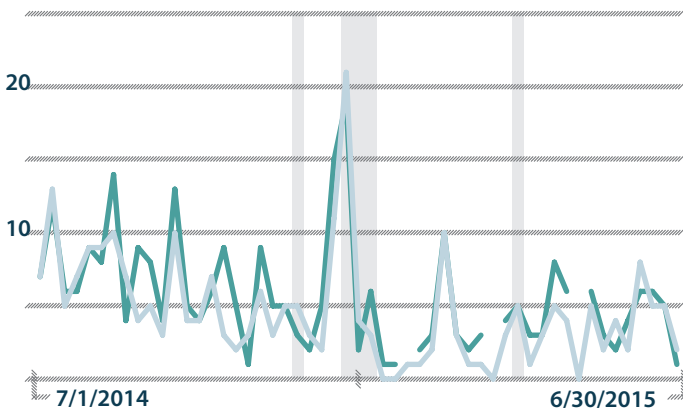
# ALARM ACTIVATION, BURGLARY AND THEFT, LOST SCHOOL KEYS, UNSECURED ACCESS

As technologies advance, electronic goods become more ubiquitous. Schools and offices are learning to leverage faster and smaller gadgets while also adapting to prevent their loss. Theft is the unauthorized taking of another person's property with the intent to deprive the rightful owner of it. Whereas, burglary is the unlawful entry of a structure with the intent to commit a crime, not just theft. Alarm activation investigation, lost keys and unsecured access to school sites are related iSTAR issue types.

As the District combats these problems, it is using data to identify high-statistic sites. Strategies and resources are being developed to prevent future theft.

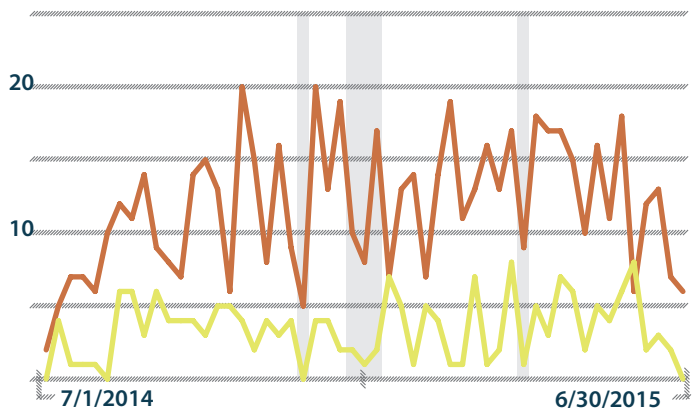


## ALARM ACTIVATION UNSECURED ACCESS



- represents alarm activation investigation issues
- represents unsecured access to school sites issues
- represents Thanksgiving, winter and spring recess

## BURGLARY AND/OR THEFT LOST SCHOOL KEYS



- represents burglary and/or theft issues
- represents lost school keys issues
- represents Thanksgiving, winter and spring recess

The charts show peaks of unsecured access and alarm activation events during the start of winter recess.

# VEHICLE COLLISION INJURIES AND ACCIDENTS



## Pedestrian Safety Do's

Put down your devices.  
Walk on sidewalks or paths; use traffic signals and crosswalks.  
At intersections, scan over your shoulder for turning vehicles.



## Pedestrian Safety Don'ts

Never run or dash into the street.  
Do not cross in the middle of the street or between parked cars.  
A flashing "DON'T WALK" signal means that a pedestrian should not start to cross the roadway.



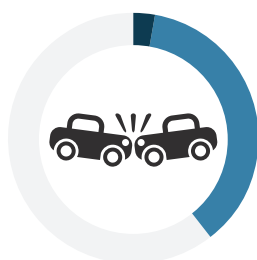
Accident, injury and death are iSTAR issue types that relate to vehicle collisions.

The incident descriptions reveal an alarming number of employees, students and family members getting into collisions to and from school. iSTAR also captures non-school day events that impact the District.

Vehicles collided with 106 more pedestrians than skateboarders. But, hit skateboarders were seven times more likely to die from their sustained injuries than their walking counterparts. Collision impacts are often more dire when travel speeds are increased. So whether you're driving, riding, or walking, please pay better attention. Someone's life might depend on it.



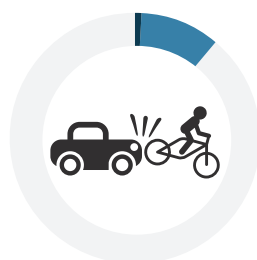
## VEHICLE COLLISION TYPES | 319 reports



Vehicle / vehicle  
126 collisions  
9 deaths



Vehicle / pedestrian  
123 collisions  
4 deaths



Vehicle / bicycle  
36 collisions  
3 deaths



Vehicle / property  
17 collisions  
1 death



Vehicle / skateboard  
17 collisions  
4 deaths

One circle represents 319 reports. ● represents non-fatal vehicle collisions; ● represents fatal vehicle collisions.



# MEDICAL INCIDENTS | 2,145 reports

In the 2014-2015 school year, iSTAR captured 2,345 medical issues within 2,145 reports. Students account for 75% of the medical issue type reports, employees for 18%, community members for 3% and some combination of students, employees and community members account for the remainder. These numbers reflect that a small percentage of the almost one million District students and employees encounter significant medical events during the school day.

## MEDICAL SUB-ISSUE TYPES

Other	975	Asthma	130
Faint	310	Intoxication	114
Seizure	300	Diabetes	44
Illness	286	Heat stress	23
Chest pain	157	Shock	6

## DESCRIPTIONS OF SELECT SUB-ISSUE TYPES

Fainting is a temporary loss of consciousness as a result of decreased blood flow to the brain. If you are prone to fainting, identify and avoid triggers.

Asthma is a disease that affects your lungs. It is one of the most common long-term diseases of children. Asthma causes wheezing, breathlessness, chest tightness, and coughing at night or early in the morning. If you have asthma, you have it all the time, but you will have asthma attacks only when something bothers your lungs. In most cases, cause of asthma is unknown. If someone in your family has asthma you are more likely to have it. It can be hard to tell if someone has asthma, especially in children under age five. Having a doctor check how well your lungs work and check for allergies can help you find out if you have asthma.

Exposure to extreme heat can result in heat-related illnesses including heat stroke, heat exhaustion, and heat rashes. Older adults, infants and children and people with chronic medical conditions are more prone to heat stress. Air-conditioning is the top protective factor against heat-related illness.

Diabetes is a disease in which blood glucose levels are above normal. When you have diabetes, your body either doesn't make enough insulin or can't use its own insulin as well as it should. This causes sugar to build up in your blood. Diabetes can cause serious health complications including heart disease, blindness, kidney failure, and lower-extremity amputations. Diabetes is the seventh leading cause of death in the United States.

### HEALTH CLINIC APPOINTMENT LINE

Call (213) 202-7590 to schedule a medical appointment at one of the clinics operated by LAUSD Student Medical Services.

## Summary of All Issues by Type

Issue Type	Count 2014/15	Count 2013/14	Change [yr over yr]	Rank 2014/15	Rank 2013/14
Abduction	48	38	10	37	39
Accident	2,805	2,700	105	4	3
Air Conditioning Problem	45	21	24	38	45
Alarm Activation Investigation	248	330	(82)	25	20
Altercation, Verbal	623	497	126	12	12
Arrest	518	410	108	14	16
Bells Out of Order	3	9	(6)	53	50
Bullying	661	596	65	11	11
Burglary	204	242	(38)	27	24
Child Annoyance	500	455	45	15	13
Custody Issue	101	70	31	33	35
Damaged/ Attempted to Damage School or Private Property	490	329	161	16	21
Death	158	112	46	29	31
Discrimination/Harassment	348	222	126	21	27
Disrupted School-Wide Activities	563	441	122	13	14
Environmental Hazard/Odor	130	103	27	31	32
Fighting/Physical Aggression	3,103	2,425	678	3	4
Fire	91	94	(3)	34	33
Fire Alarm System	45	63	(18)	39	36
Fire Sprinkler Broken	11	10	1	48	49
Fraud Allegation	22	27	(5)	45	42
Gas Leak/Odor	30	27	3	42	43
Hate Violence	21	15	6	46	46
Hazing	8	3	5	50	53
Heating System Problem	9	9	0	49	51
Illegal/Controlled Substance	746	692	54	10	9
Inappropriate Conduct	1,780	1,708	72	6	6
Injury	6,722	5,773	949	1	1

Issue Type	Count 2014/15	Count 2013/14	Change [yr over yr]	Rank 2014/15	Rank 2013/14
Intergroup Conflict	28	34	(6)	43	41
Lockdown	318	304	14	22	22
Loitering	74	47	27	35	38
Lost School Keys	181	131	50	28	29
Medical	2,345	1,761	584	5	5
Missing/Runaway	483	405	78	17	17
Other		230			26
Public Shelter	4	3	1	52	54
Robbery	134	126	8	30	30
Rodent/Insect Problems	18	15	3	47	47
Sewer Problem	120	82	38	32	34
Sex Crime/Sexual Behavior, Inappropriate	1,163	980	183	8	8
Shelter in Place	25	12	13	44	48
Shooting	52	52	0	36	37
Suicidal Behavior	4,607	3,969	638	2	2
Technology Failure	38	25	13	41	44
Testing	7	6	1	51	52
Theft	421	395	26	19	18
Threat	1,318	1,097	221	7	7
Trauma/Violence Exposure	359	235	124	20	25
Trespass	267	266	(1)	24	23
Unsecured Access to School Site	288	439	(151)	23	15
Utility Failure	213	197	16	26	28
Vandalism/Property Damage	436	388	48	18	19
Walkout/Demonstration	39	37	2	40	40
Weapons	839	682	157	9	10
<b>Grand Total</b>	<b>33,810</b>	<b>29,339</b>	<b>4,471</b>		

\* Issue type is no longer used in 2014/15 fiscal year.

The Incident System Tracking Accountability Report or iSTAR system was developed in 2010 to electronically capture incidents that affect the Los Angeles Unified School District, its students, employees, and surrounding communities.

The mission of the Office of School Operations is to ensure that every LAUSD site receives support and guidance for creating and maintaining a safe and caring environment that supports learning and achievement.

Office of School Operations

Website: <http://schooloperations.lausd.net>

Telephone: (213) 241-5337

Facsimile: (213) 241-8950

All information and statistics contained within this report were derived from data recorded in the Incident System Tracking Accountability Report (iSTAR) system.

Statistics published in the annual report include only incidents reported in the iSTAR system unless otherwise noted. Information does not include reports collected by other LAUSD agencies (e.g., School Police). Incidents may be unreported or erroneously reported in the iSTAR system.

