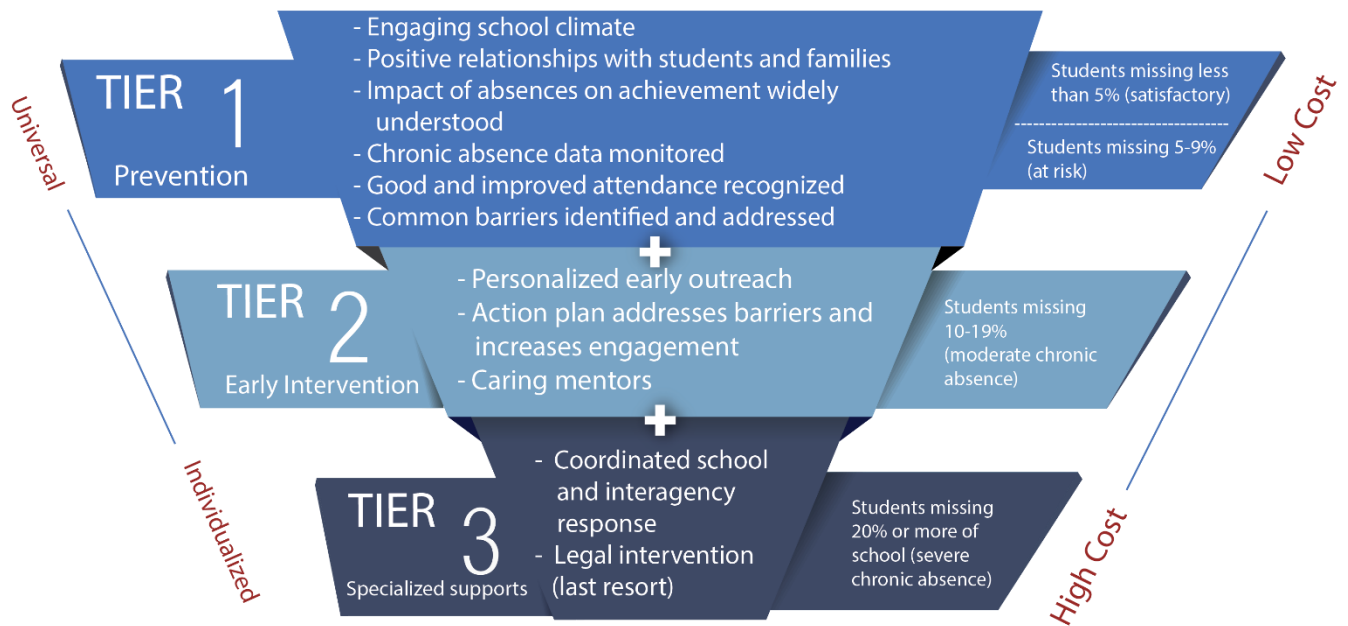


# 3 Tiers of Intervention



As a team, work together to complete the pyramid.  
What systems do you currently have in place to address each tier?

Name of School or District \_\_\_\_\_

How many students are in each tier?

Tier 3	#
Tier 2	#
Tier 1B	#
Tier 1A	#

**TIER 3: Severe Chronic Absence --**  
missed 20% or more of school (4+ days per month)

- 1.
- 2.
- 3.

**TIER 2: Moderate Chronic Absence --**  
missed 10-19.99% of school (2-3 days per month)

- 1.
- 2.
- 3.

**TIER 1B: At-risk --** missed 5-9.99% of school (1+ days per month)

- 1.
- 2.
- 3.

.....

**TIER 1A: Satisfactory Attendance --** missed less than 5% of school (< 1 day per month)

- 1.
- 2.
- 3.

High Cost

Low Cost