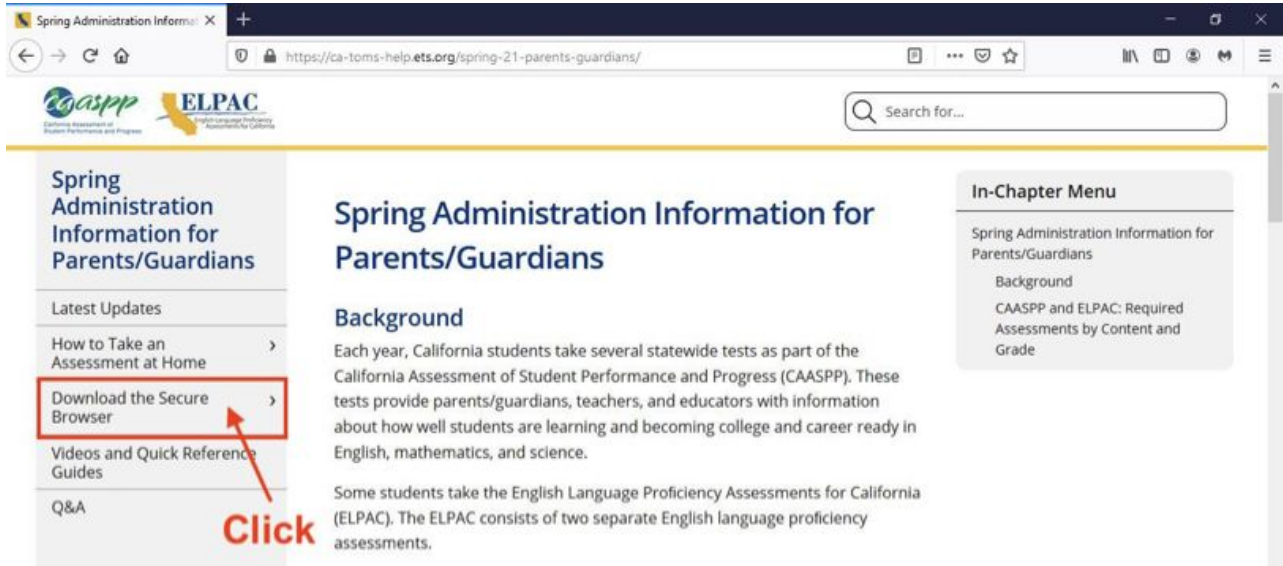


Secure Browser Installation for Windows

1. Go to this website (http://bit.ly/spring_21)

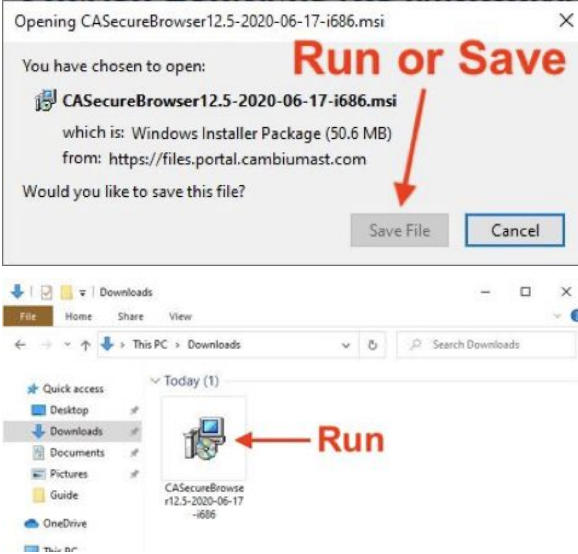

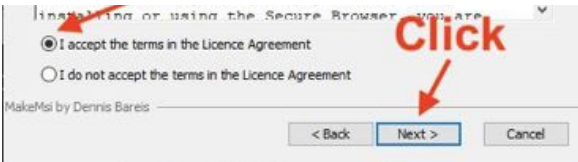
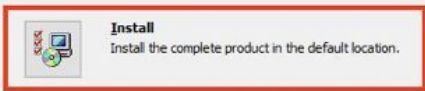


2. In the sidebar click “Secure Browser for Windows”



3. On the center of the page click “Download the Secure Browser for Windows” Note: when you download the Secure Browser, you may see a warning about downloading potentially harmful files from the internet. This file is safe to download and run.

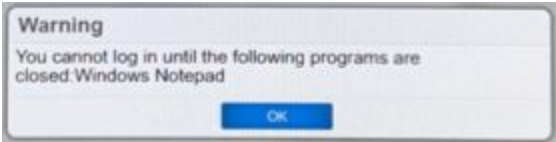



<p>4. Select “Run” or “Save File”</p> <p>Note: Depending on the web browser, you will have these options:</p> <p>-If it prompts you to run or save the installation file, select the [Run] button.</p> <p>-If it prompts you to save the installation file, save it. Then, double-click the installation file that was downloaded (named CASecureBrowserX.X-YYYY-MM-DD.msi) to run it”</p>	
<p>5. Select “Next”</p>	
<p>6. Accept terms in the End-User License Agreement then select “Next”</p>	
<p>7. Select “Install”</p>	

<p>8. Click “Next”</p> <p>Note: You might get this step. If you don’t go to the next slide.</p>	 <p>Custom Setup Select the way you want features to be installed.</p> <p>Click on the icons in the tree below to change the way features will be installed.</p> <p>The Complete feature This feature requires 130MB on your hard drive.</p> <p>Location: C:\Program Files (x86)\CAsureBrowser\ Browse</p> <p>MakeMe! by Dennis Bareis</p> <p>Reset Disk Usage < Back Next > Cancel</p>
<p>9. Click “Install”</p>	 <p>Completing the CAsureBrowser Setup Wizard</p> <p>Click the Finish button to exit the Setup Wizard.</p> <p>< Back Finish Cancel</p>

Opening Secure Browser for Windows

Before Starting make sure all programs are closed. You will receive this message if programs aren’t closed.



<p>1. Double Click on the Secure Browser application on the Desktop.</p>	
<p>2. Browser Opened Successfully</p> <ul style="list-style-type: none"> -The first name and SSID are necessary. Ask Teacher for this information -The Session ID will be provided by the teacher prior to the test 	