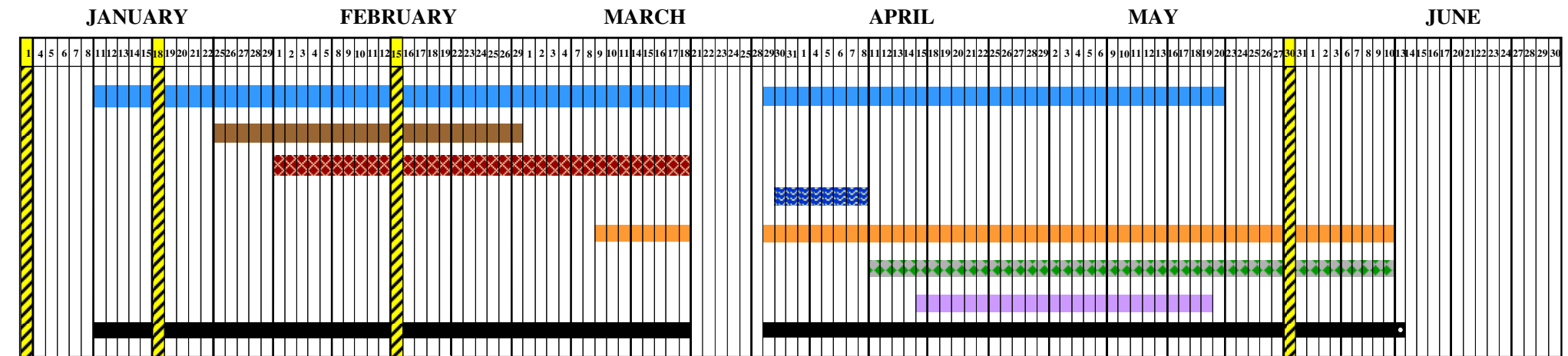
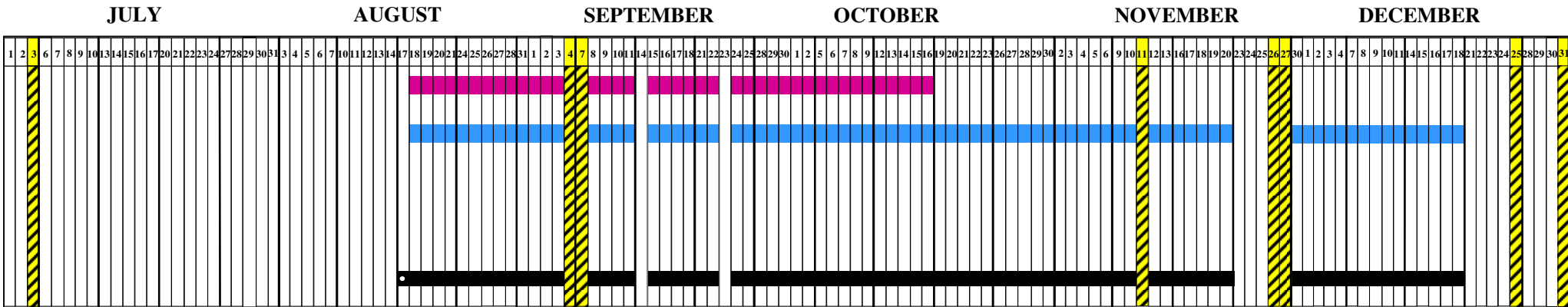




DRAFT

LOS ANGELES UNIFIED SCHOOL DISTRICT 2015-2016 TESTING CALENDAR SINGLE TRACK, Elementary Schools, Grades K-6



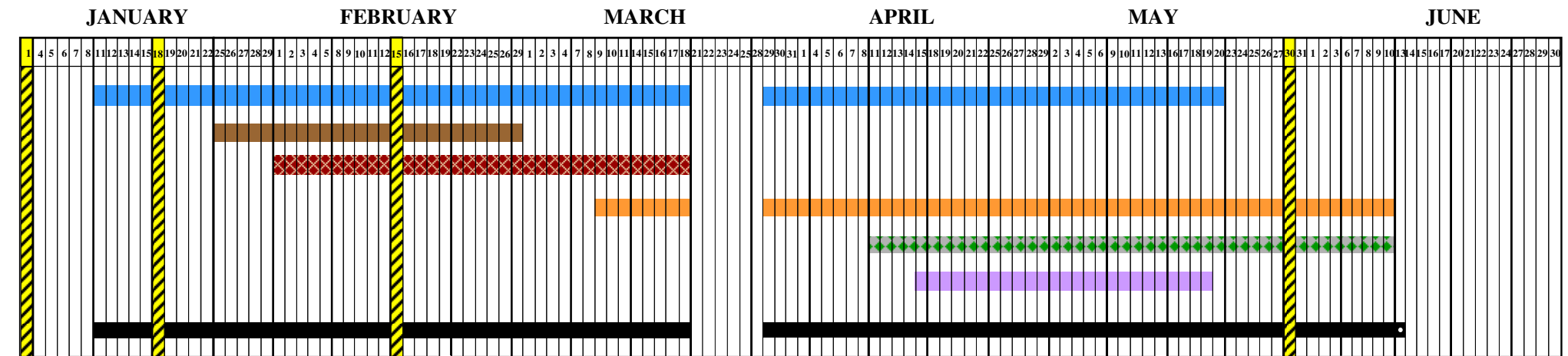
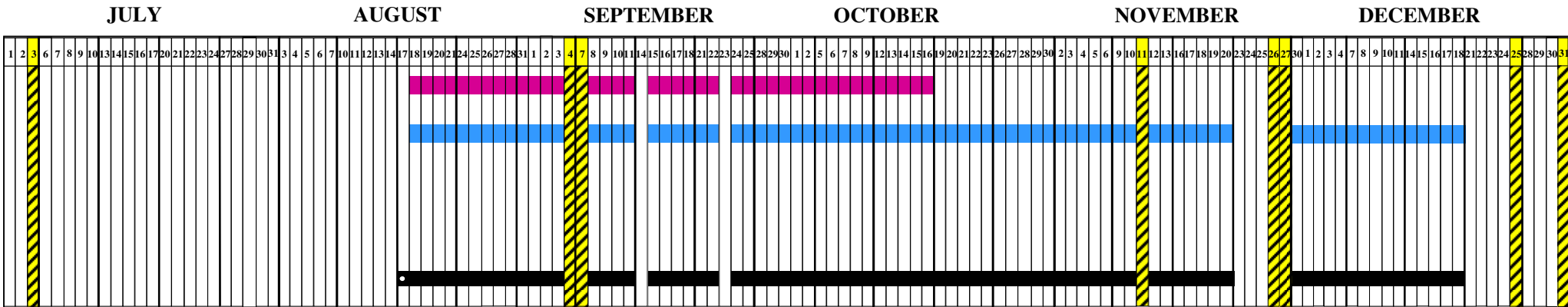
National / State / District Mandated Tests

- Annual CA English Language Development Test (CELDT)
- Initial CA English Language Development Test (CELDT)
- National Assessment of Educational Progress (NAEP)
- CA Physical Fitness Test
- Smarter Balanced Summative Assessments
- Progress in International Reading Literacy Study (PIRLS)
- California Alternate Assessment (CalALT)
- ELPAC Pilot Test (CELDT)--(TBD)
- CA Standards Tests (CST), CA Alternate Performance Assessment (CAPA), CA Modified Assessment (CMA), & Standards-based Tests in Spanish (STS)
- Instructional Days



DRAFT

LOS ANGELES UNIFIED SCHOOL DISTRICT
2015-2016 TESTING CALENDAR
SINGLE TRACK, Middle Schools, Grades 6-8



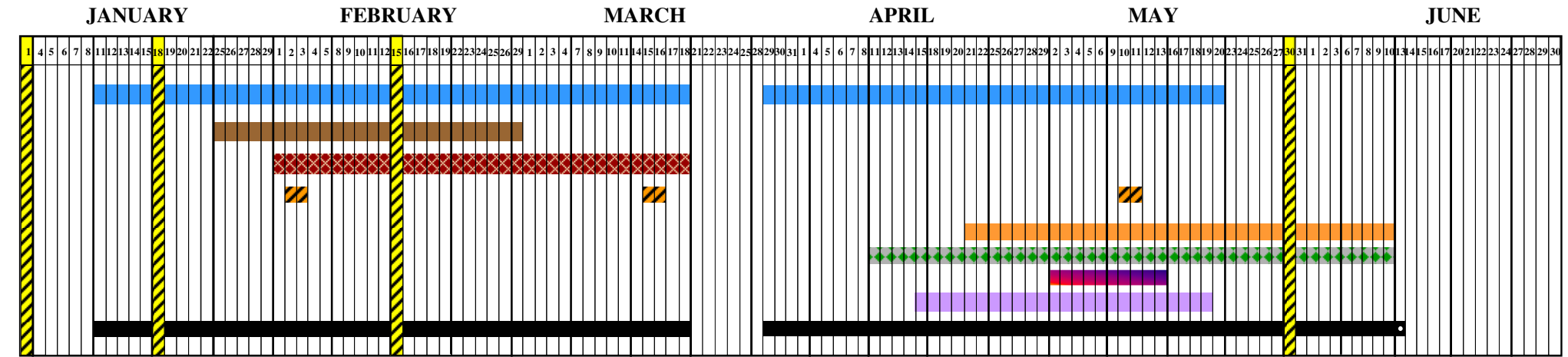
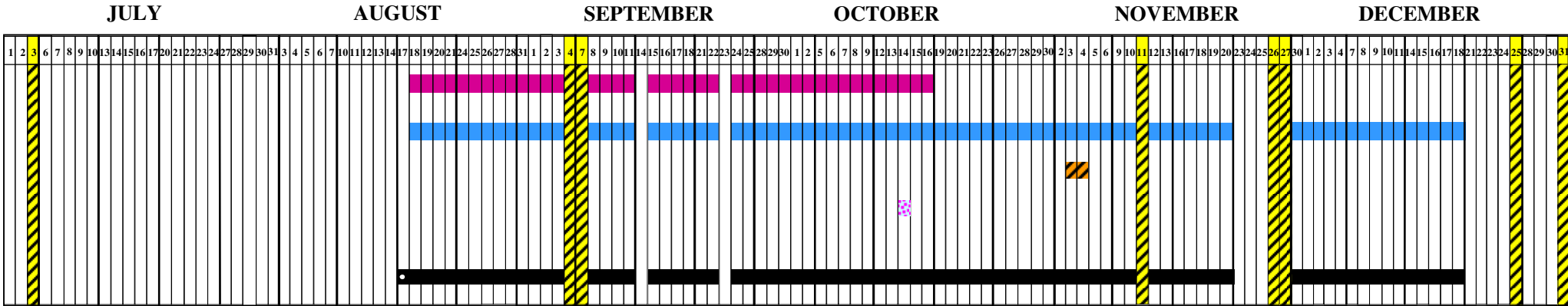
National / State / District Mandated Tests

- Annual CA English Language Development Test (CELDT)
- Initial CA English Language Development Test (CELDT)
- National Assessment of Educational Progress (NAEP)
- CA Physical Fitness Test
- Smarter Balanced Summative Assessments
- Progress in International Reading Literacy Study (PIRLS)
- California Alternate Assessment (CalALT)
- ELPAC Pilot Test (CELDT)--(TBD)
- CA Standards Tests (CST), CA Alternate Performance Assessment (CAPA), CA Modified Assessment (CMA), & Standards-based Tests in Spanish (STS)
- Instructional Days



DRAFT

LOS ANGELES UNIFIED SCHOOL DISTRICT
2015-2016 TESTING CALENDAR
SINGLE TRACK, High Schools, Grades 9-12



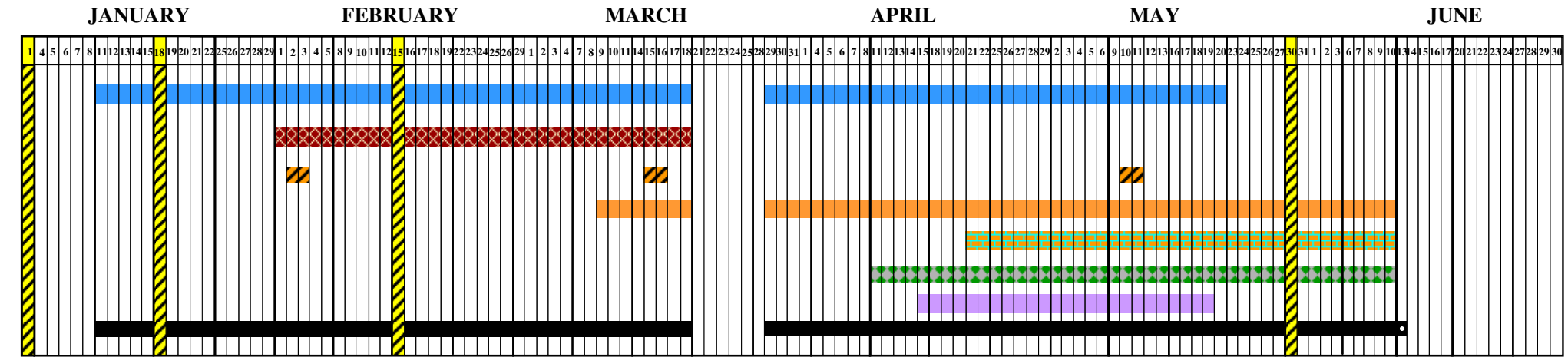
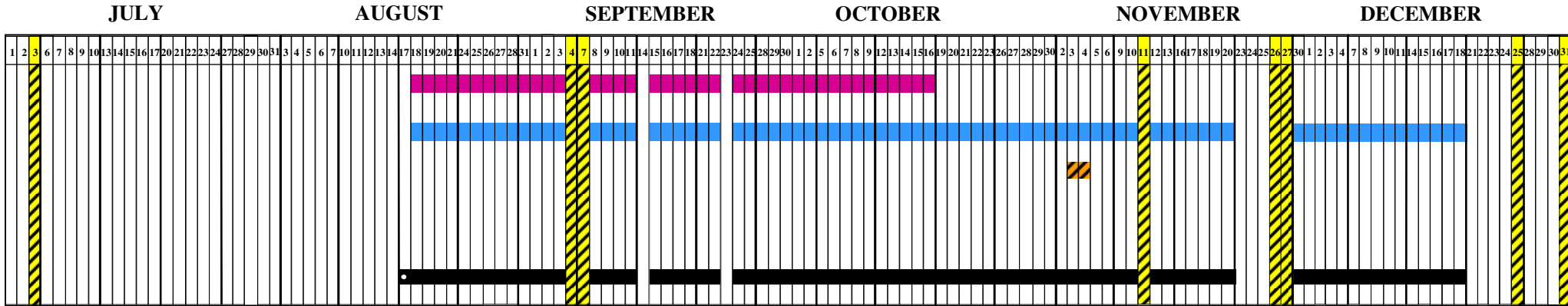
National / State / District Mandated Tests

- | | | | | |
|--|--|--|--|--------------------|
| Annual CA English Language Development Test (CELDT) | Smarter Balanced Summative Assessments | California Alternate Assessment (CalALT) | CA Standards Tests (CST), CA Alternate Performance Assessment (CAPA), CA Modified Assessment (CMA), & Standards-based Tests in Spanish (STS) | Instructional Days |
| Initial CA English Language Development Test (CELDT) | Progress in International Reading Literacy Study (PIRLS) | ELPAC Pilot Test (CELDT)--(TBD) | | |
| National Assessment of Educational Progress (NAEP) | CA Physical Fitness Test | PSAT | | |
| CA High School Exit Examination (CAHSEE) | Advanced Placement Examinations (AP) | | | |



DRAFT

LOS ANGELES UNIFIED SCHOOL DISTRICT
2015-2016 TESTING CALENDAR
SINGLE TRACK, Special Education Schools, Grades K-12



National / State / District Mandated Tests

- Annual CA English Language Development Test (CELDT)
- Initial CA English Language Development Test (CELDT)
- National Assessment of Educational Progress (NAEP)
- CA Physical Fitness Test
- Smarter Balanced Summative Assessments—Grades 3-8
- Smarter Balanced Summative Assessments—Grade 11
- Progress in International Reading Literacy Study (PIRLS)
- CA High School Exit Examination (CAHSEE)
- California Alternate Assessment (CalALT)
- ELPAC Pilot Test (CELDT)--(TBD)
- CA Standards Tests (CST), CA Alternate Performance Assessment (CAPA), CA Modified Assessment (CMA), & Standards-based Tests in Spanish (STS)
- Instructional Days



DRAFT

LOS ANGELES UNIFIED SCHOOL DISTRICT
2015-2016 TESTING CALENDAR
FOUR TRACK, High Schools, Grades 9-12



JULY

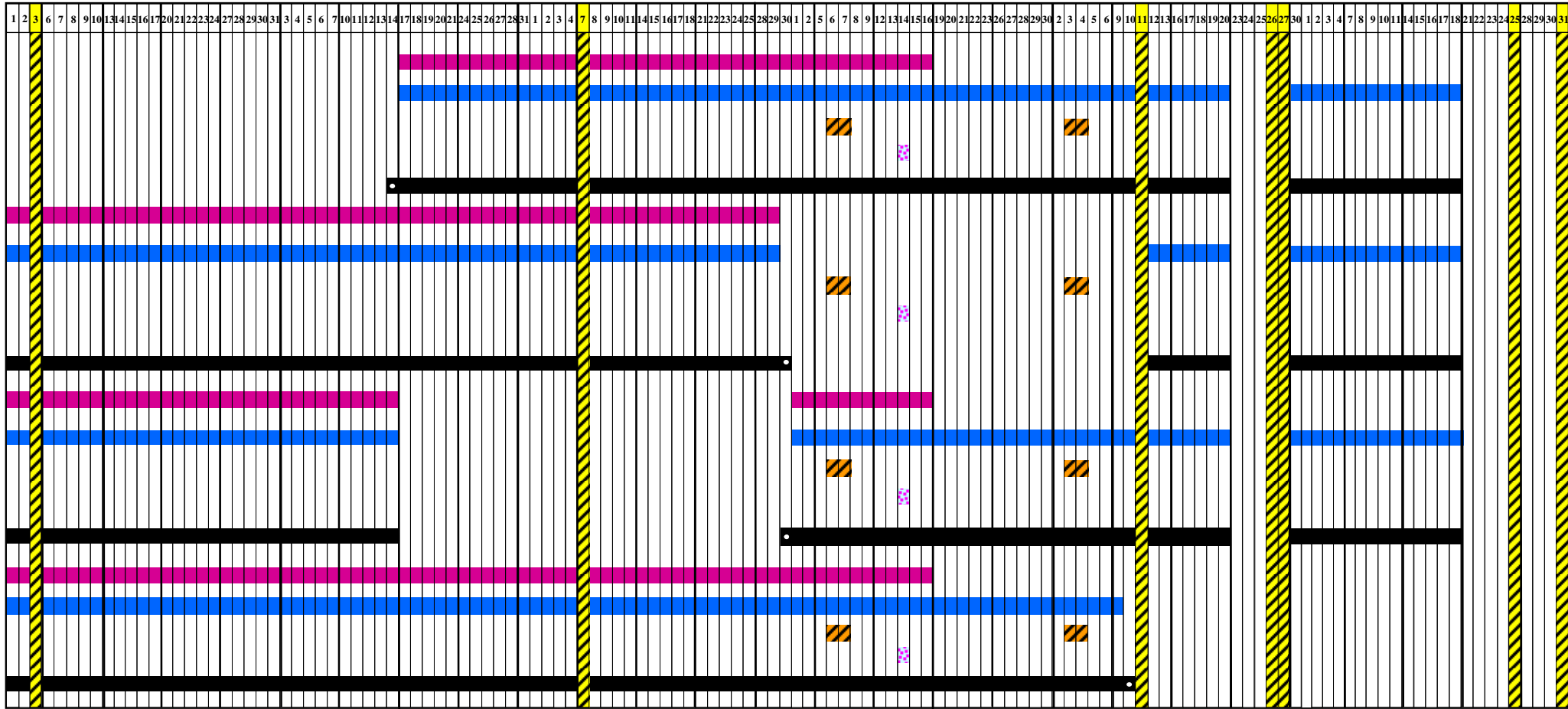
AUGUST

SEPTEMBER

OCTOBER

NOVEMBER

DECEMBER



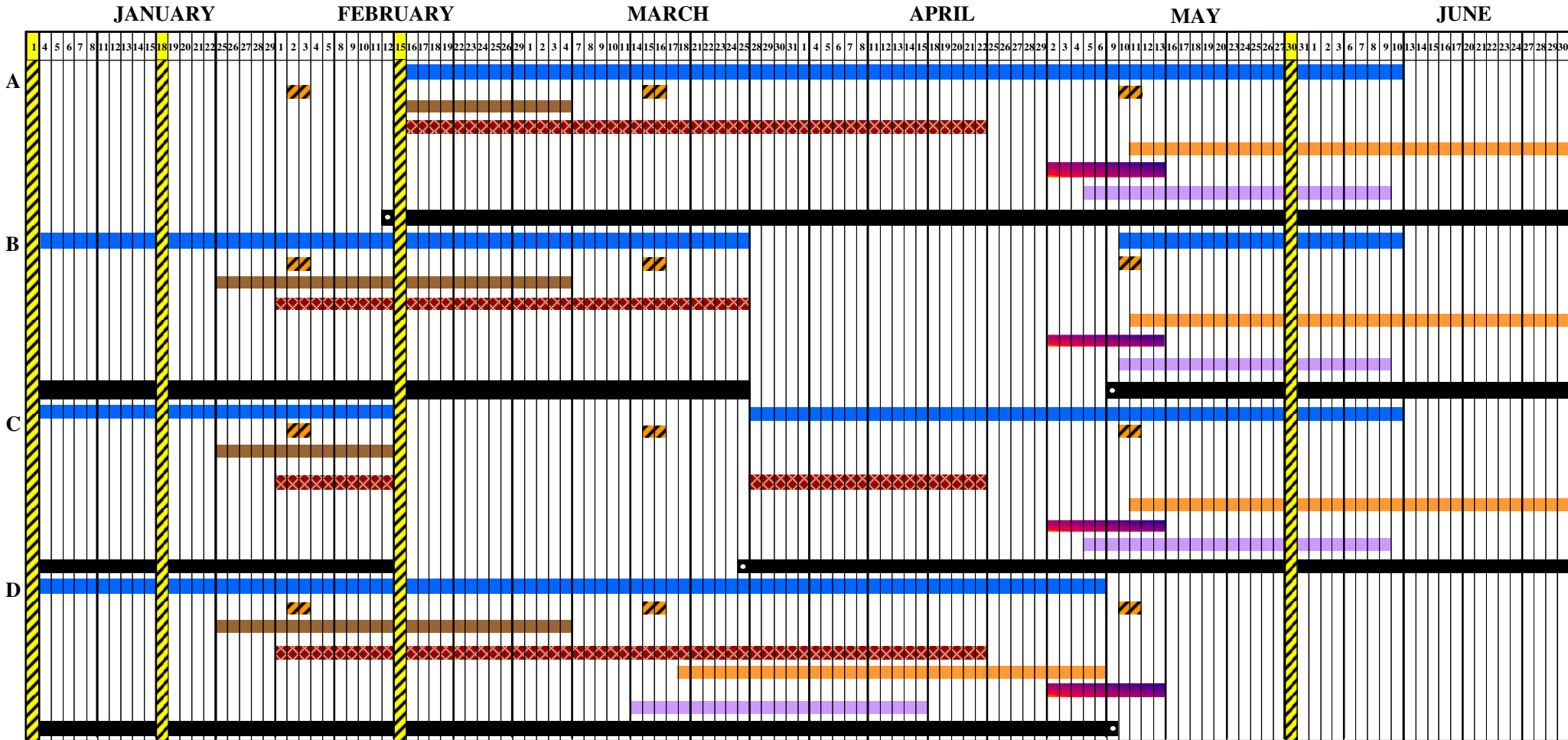
National / State / District Mandated Tests

Annual CA English Language Development Test (CELDT)	National Assessment of Educational Progress (NAEP)	Smarter Balance Summative Assessments	CA Standards Tests (CST), CA Alternate Performance Assessment (CAPA), CA Modified Assessment (CMA), & Standards-based Tests in Spanish (STS)	Instructional Days
Initial CA English Language Development Test (CELDT)	Advanced Placement Examinations (AP)	CA High School Exit Examination (CAHSEE)	ELPAC Pilot Test (CELDT)--(TBD)	
CA High School Exit Examination (CAHSEE)	ELPAC Pilot Test (CELDT)--(TBD)	CA Physical Fitness Test		
PSAT				



DRAFT

LOS ANGELES UNIFIED SCHOOL DISTRICT
2015-2016 TESTING CALENDAR
FOUR TRACK, High Schools, Grades 9-12



National / State / District Mandated Tests

Annual CA English Language Development Test (CELDT)	National Assessment of Educational Progress (NAEP)	Smarter Balance Summative Assessments	CA Standards Tests (CST), CA Alternate Performance Assessment (CAPA), CA Modified Assessment (CMA), & Standards-based Tests in Spanish (STS)	Instructional Days
Initial CA English Language Development Test (CELDT)	Advanced Placement Examinations (AP)	CA Physical Fitness Test		
CA High School Exit Examination (CAHSEE)	ELPAC Pilot Test (CELDT)--(TBD)			
PSAT				